

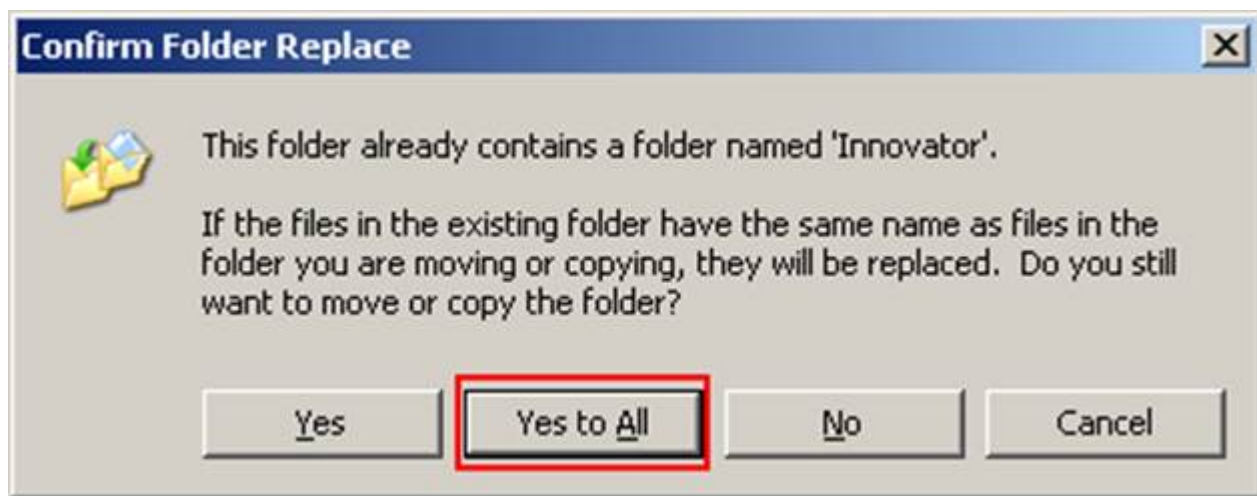
Installing the Program Management Extension

The Program Management Extension can be installed using the Manual Installation option (using the Aras Import Tool).

Manual Installation Option

1. Download the Aras ProAppDesigner CD Image from the Aras FTP site, in the Aras ProAppDesigner Releases folder, and unzip the file on the local computer.
2. Navigate to \AddOns\Program Management Extension folder
3. Copy the \Files\Innovator folder to the root of your install directory, overwriting the existing \Innovator folder and all its contents.

It is recommended that this step be performed by an administrator on the server.



4. From the root of your code tree, navigate to \Innovator\Server and edit the `method-config.xml` file.

1. Add below entries as shown:

```
...  
<!-- Start: Program Management Extension-->  
<name>$(binpath)/Prorigo.Plm.Apps.ProgramManagement.dll</name>
```



```
<!-- END: Program Management Extension -->
</ReferencedAssemblies>
```

2. Save the changes to the method-config.xml file and close it

5. From the root of your code tree, navigate to \Innovator\Client and edit the

InnovatorClient.config file.

1. Change the value of the filesRevision attribute. The value should be changed from std to 2, 3, 4, etc

```
<auth configSource="Auth.config" />
<teachingModule moduleEnabled="true" filesRevision="2" />
<staticContent>
...
```

2. Save the changes to the InnovatorClient.config file and close it.

6. Restart the World Wide Web Service (IIS).

7. Execute **Pre-Import Scripts**

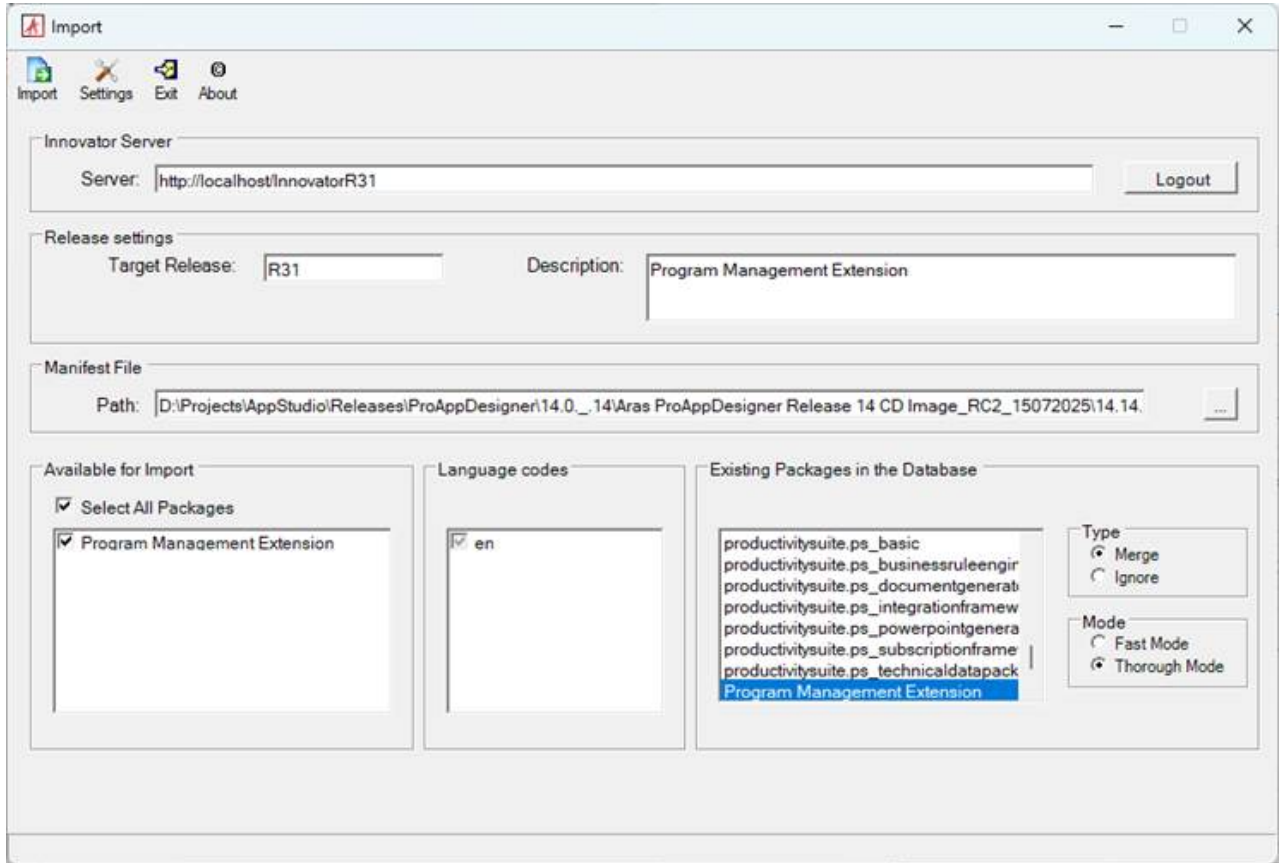
Before you install Program Management Extension, execute below scripts:

1. Navigate Aras Nash tool using URL <http://localhost/InnovatorServer/Client/scripts/nash.aspx>
2. Login in Nash using **admin** user.



3. In the package go to folder PreImportAMLScripts, open each file in below sequence, copy the content in XML form and click on Submit.
 - 0001_PM_TemplateDeploy_PreAML.xml
 - 0002_MethodPackageCorrection.xml
8. Import the **Program Management Extension** database package with the Package Import Export Utilities (For more information using this tool, please see the *Aras Innovator - Package Import Export Utilities* documentation.)
 1. You will need to enable the “Super User” login to perform this step.
Browse to the \PackageImportExportUtilities\Import\ folder and run the Import.exe file.
 2. Disable the “Super User” login.





3. Enter the following information:

- **Server** = The connection URL for Aras Innovator
- **Database** = The target Aras Innovator database (login screen)
- **Username** = root (login screen)
- **Password** = Password for “root” login (Default is “innovator”) (login screen)
- **Target Release** = Program Management Extension
- **Description** = Program Management Extension
- **Manifest File Path** = The manifest is found in the unzipped patch folder in \AddOns\Program Management Extension\Imports\imports.mf
- **Available for Import** = Check all packages
- **Type** = Merge
- **Mode** = Thorough Mode

4. Click the **Import** button.

9. Disable the “Super User” login.

10. Execute **Post Import Scripts**

After you install Aras Program Management Extension, execute below scripts:

1. a. Navigate Aras Nash tool using URL <http://localhost/InnovatorServer/Client/scripts/nash.aspx>
2. Login in Nash using **admin** user.



localhost/InnovatorServerR27/Client/X-salt=std_14.0.15.38102-X/scripts/nash.aspx

aras | NASH Database: InnovatorR27_New User: admin

TimeZone: Eastern Standard Time Culture: en-US - English (United States)

Action: ApplyAML Server: http://localhost/InnovatorServerR27/Server/InnovatorServer.aspx

XML:

Submit
Clear

Run time, sec: 0,000 Result: read ShowXml

Name	Publisher	Installed On	Size	Version	Comments
Aras Innovator	Aras Corporation	1/20/2022	1.09 GB	14.0.0	Installed to C:\Program Files (x86)\Aras\...
Aras Innovator	Aras Corporation	4/12/2023	0.99 GB	14.0.17	Installed to C:\Aras\14.0.15\
Aras Innovator	Aras Corporation	3/7/2022	899 MB	12.0.0	Installed to C:\Program Files (x86)\Aras\...

- In the package go to folder PostImportAMLScripts, open each file in below sequence, copy the content in XML form and click on Submit.
 - 0001_PM_ExecutesQL.xml
 - 0002_PM_TemplateDeploy_PostAML.xml

