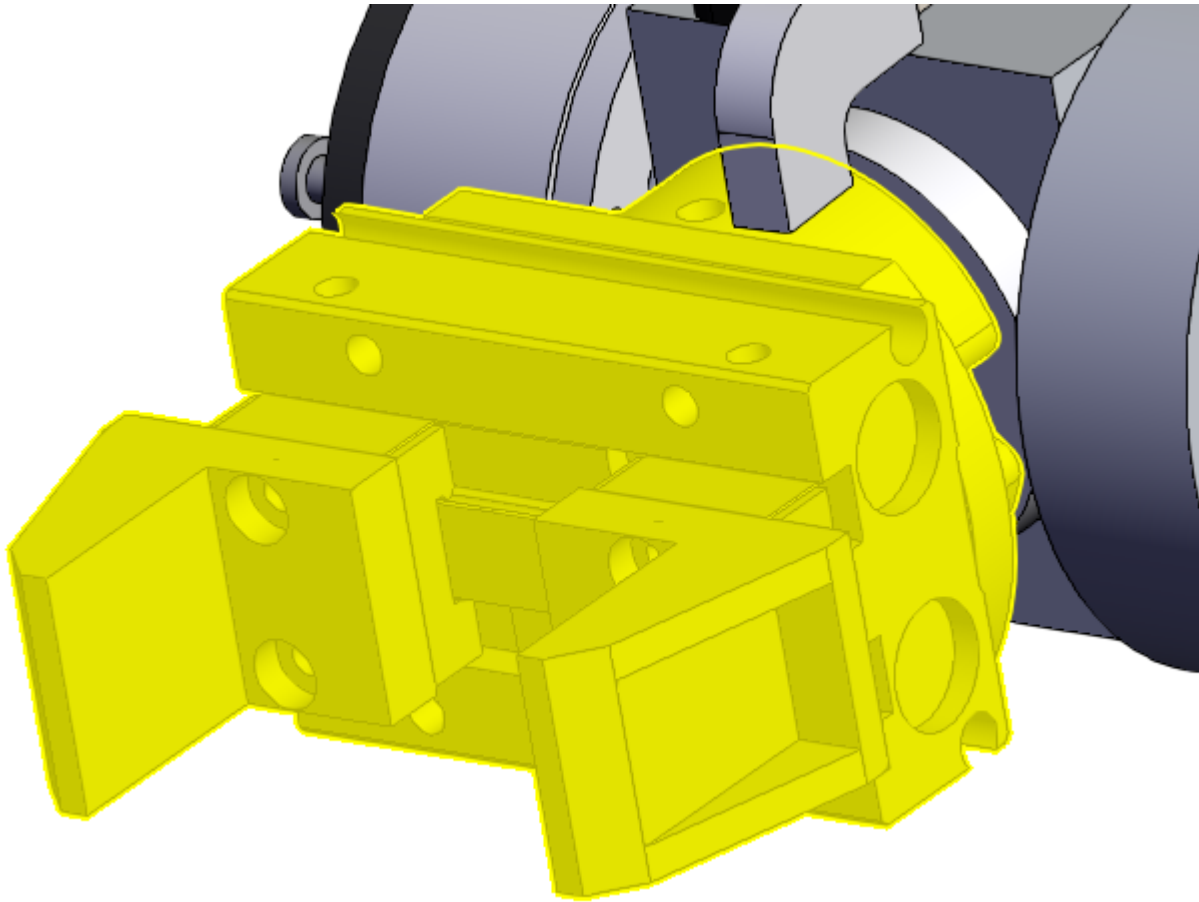


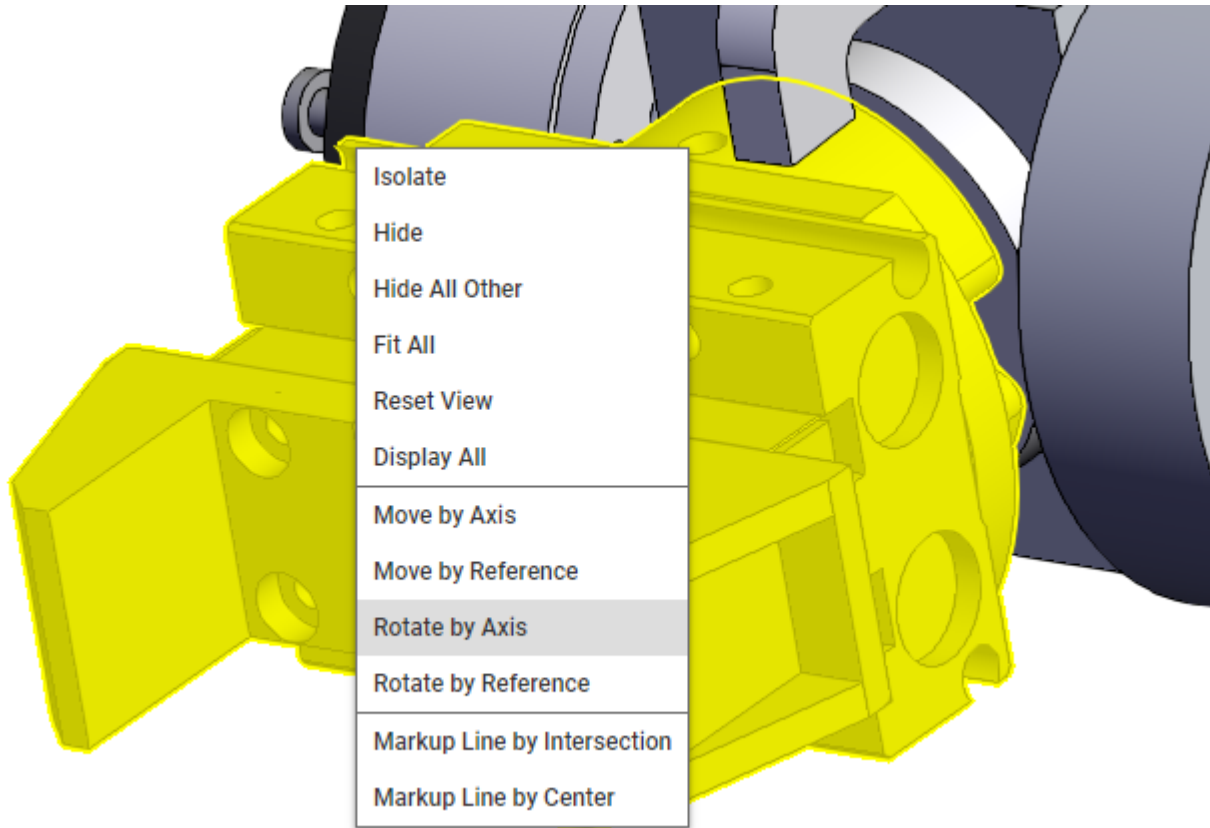
Rotating Parts by Axis

The following steps outline the process to rotate a subassembly or a leaf part along one or more of the X, Y, and Z axes in its own coordinate system:

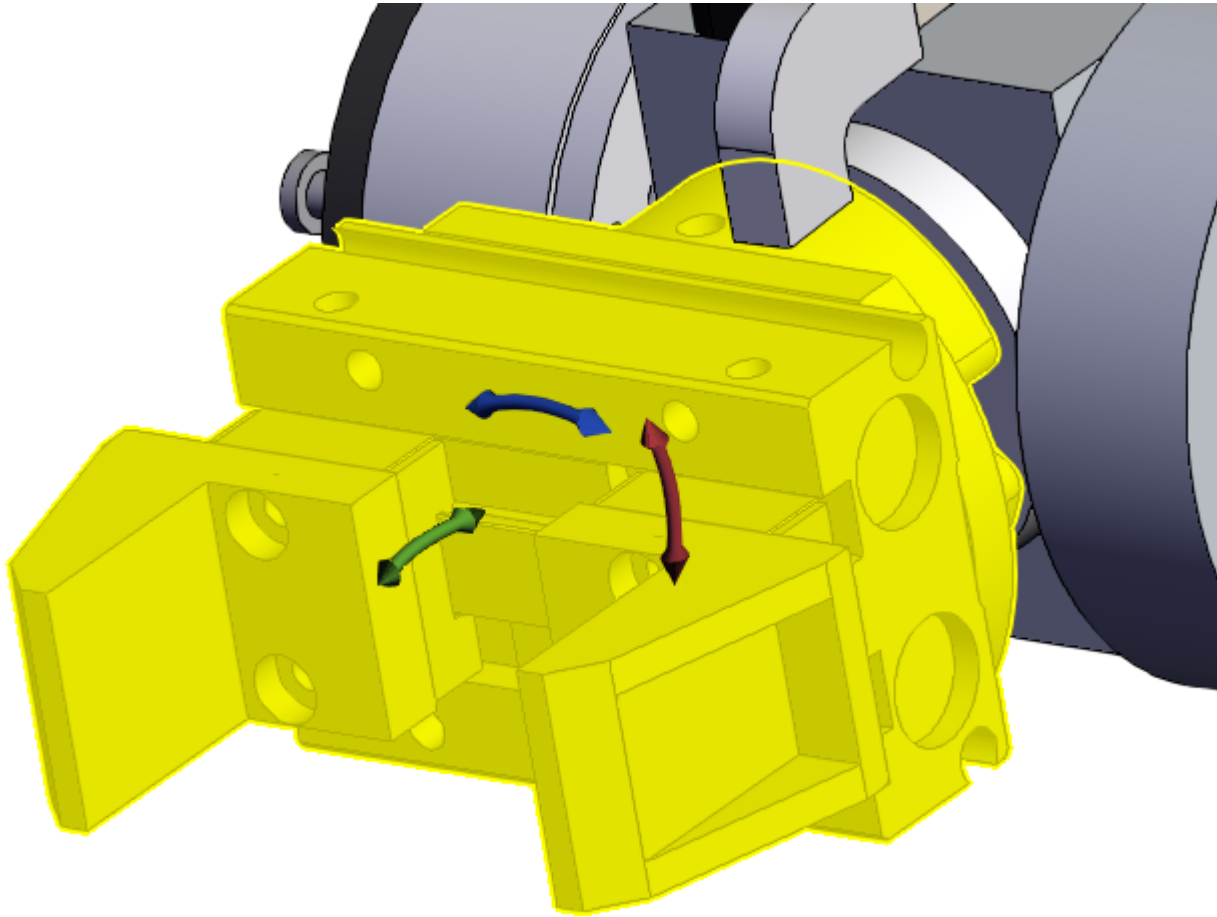
1. Select the subassembly or part.



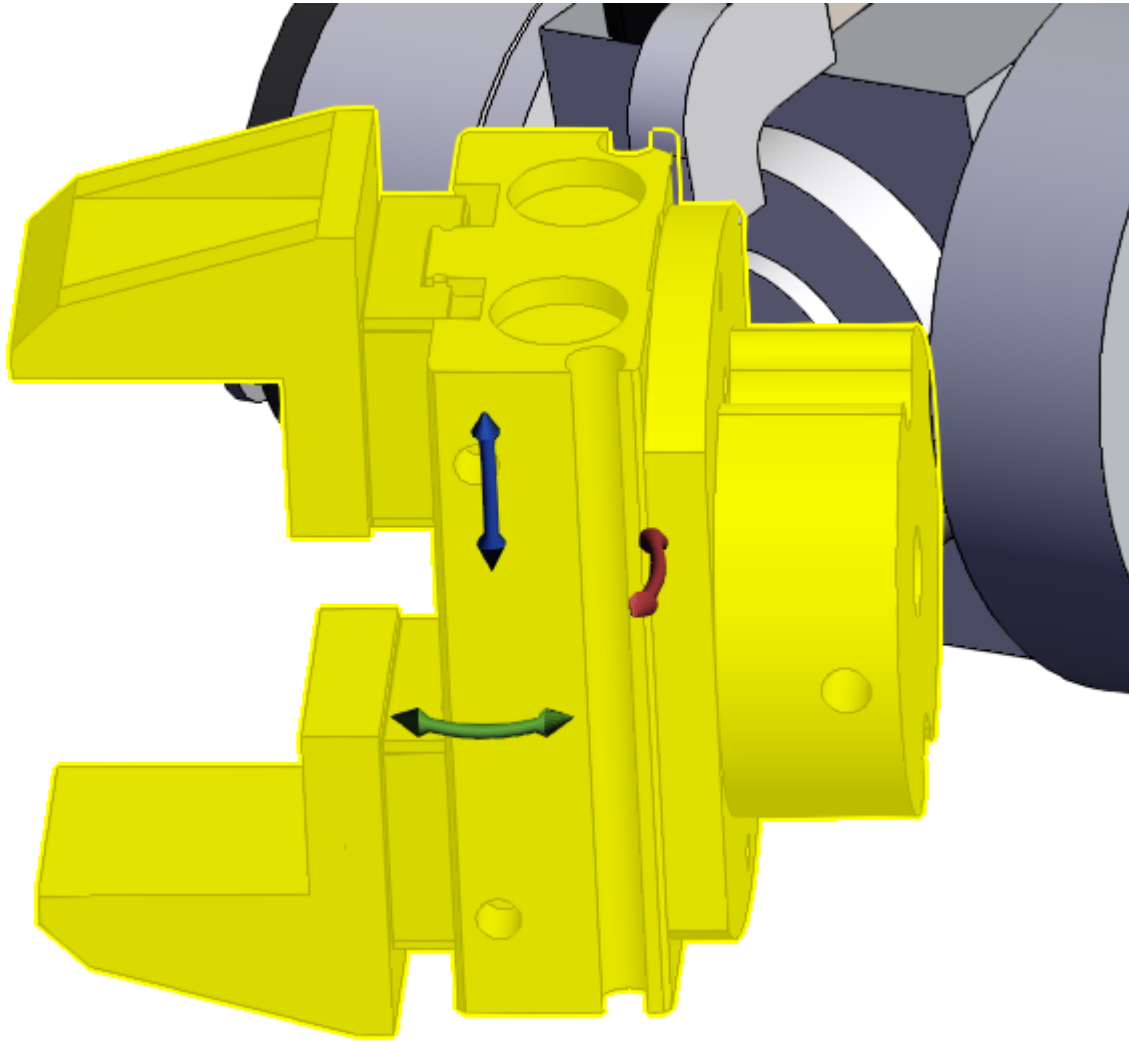
2. Right-click the subassembly or part.



3. Click **Rotate by Axis** in the **Part** context menu. The **X**, **Y**, and **Z** rotation axes appear near the model.

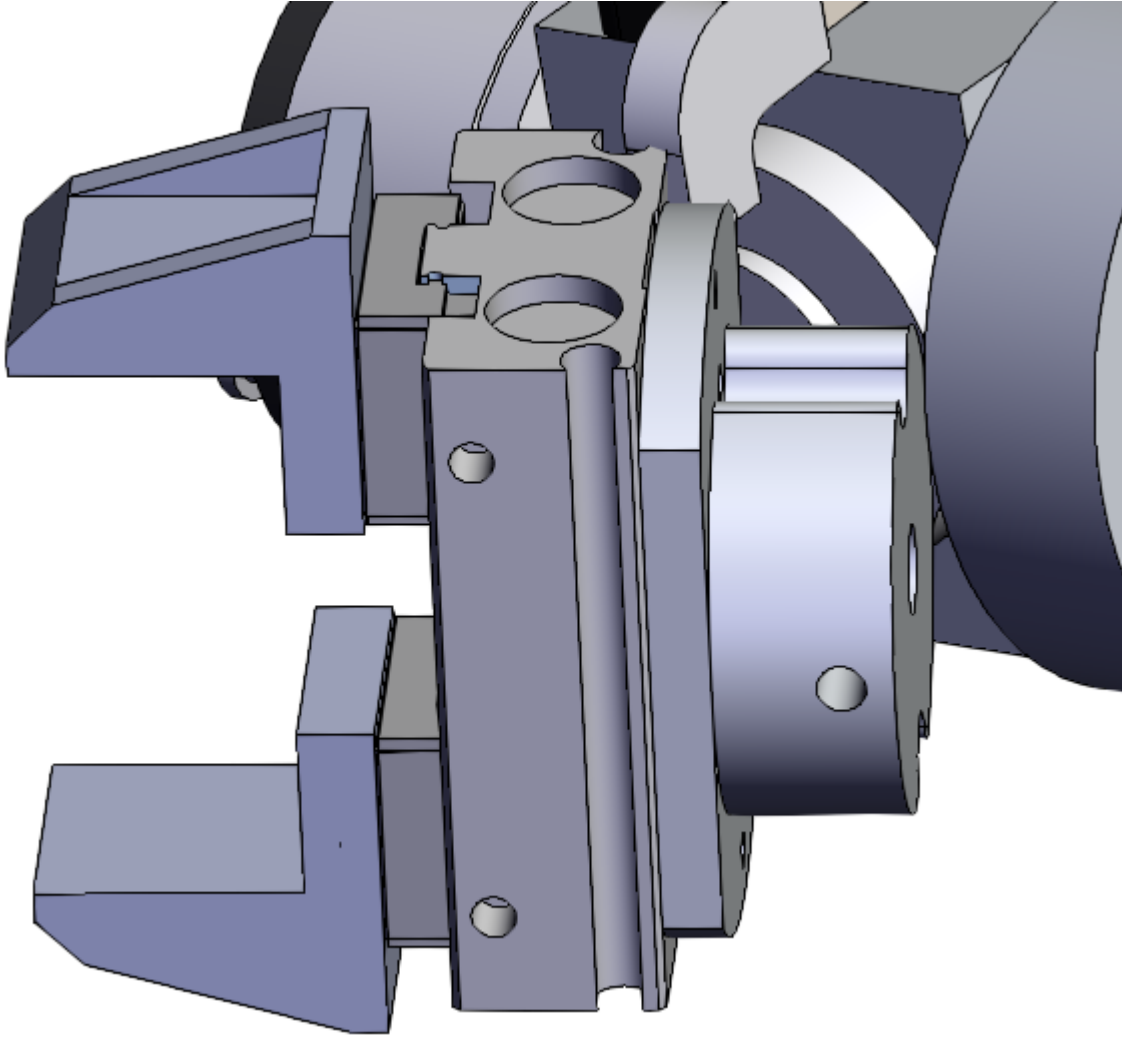


4. Drag the **X**, **Y**, and **Z** axes by one to rotate the subassembly or part as necessary.



5. Once the necessary orientation is achieved, quit the manual geometry transformation mode.
This can be done in two ways:

- Click outside the rotated subassembly or part.
- Press Escape on the keyboard.



The new subassembly or part orientation is preserved. The 3D CAD model is ready for viewing and other manipulations.

