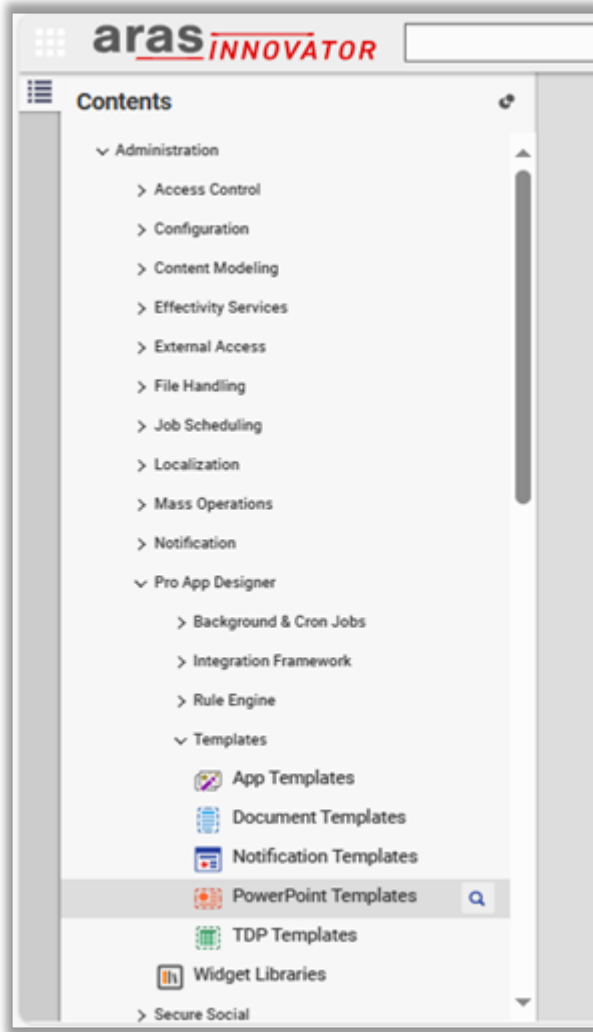


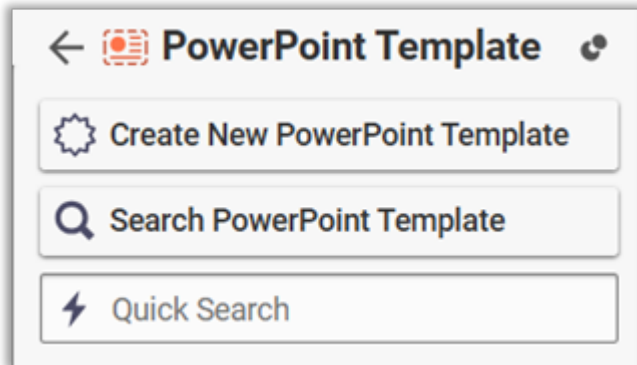
Presentation Generator Template Configurations

1. Go to TOC à Administration à Pro App Designer à Templates à PowerPoint Templates.

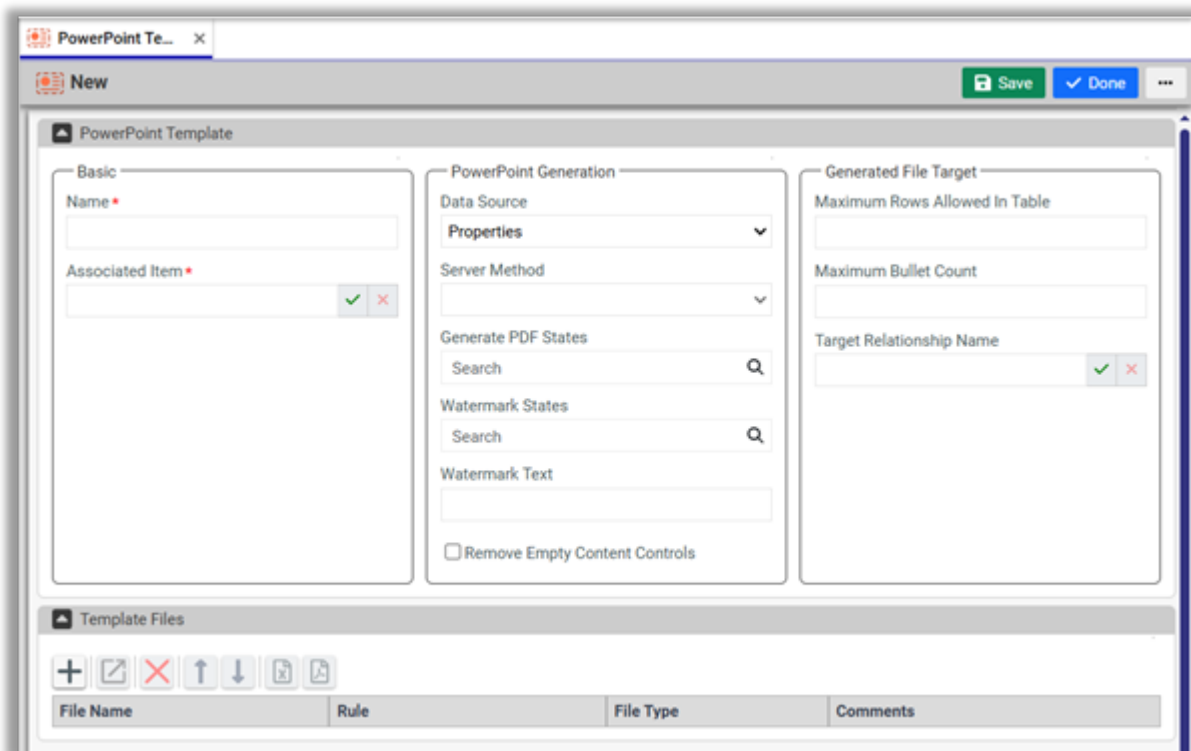


2. Click on Create New PowerPoint template.





3. Enter the necessary information, save your work, and add the template file accordingly.



Following are the details for PowerPoint Template properties:

Basic:

- **Name:** The name of the PowerPoint template is a required property and must be specified in order to save the template.
- **Associated Item:** The context item for which the presentation template is being created is a required property and must be specified to save the template.



PowerPoint Generation:

- **Data Source:** There are two options available for selection under Data Source. The first option is 'Properties' (selected by default), and the second option is 'Server Method'.
- **Server Method:** Server method selection is available when 'Server Method' is chosen as the data source. All methods configured as Server Events on the associated item will be listed for selection.
- **Generate PDF States:** A list of states for which the PDF will be generated must be specified.
- **Watermark States:** Specifies the list of states during which watermarks should be applied when generating the PDF.
- **Watermark Text:** Specifies the text to be used for watermarking. This attribute is applicable only when the 'Watermark States' attribute is defined.
- **Remove Empty Content Control:** Determines whether empty content controls should be removed from the generated PDF. This setting is applied during the presentation generation process.

Generated File Target:

- **Maximum Rows Allowed in Table:** Specifies the maximum number of table rows that should be displayed on a single slide.
- **Maximum Bullet Count:** Specifies the maximum number of bullet points that should be displayed on a single slide.
- **Target Relationship Name:** Specifies the name of the relationship to which the files will be attached after processing.

