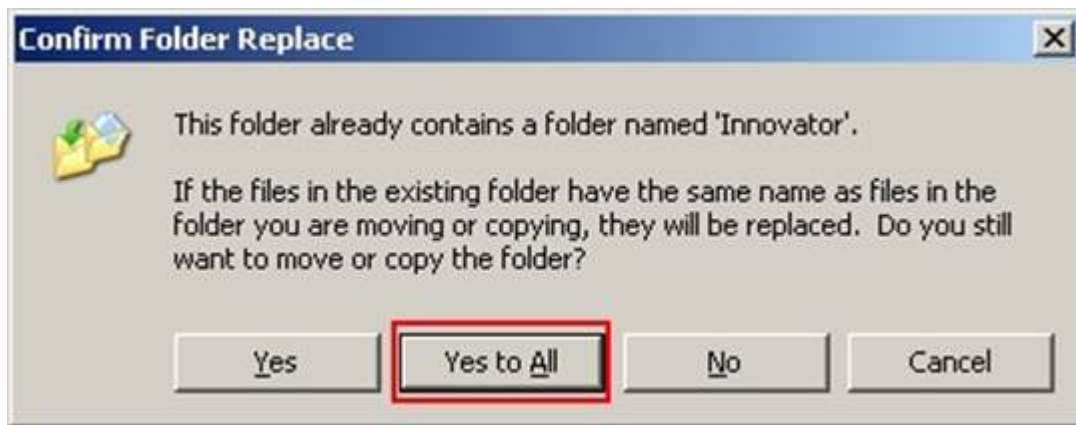


Manual Upgrade Option

1. From the **Aras Event Handling Framework 32 CD Image** folder, locate and extract the Aras Event Handling Framework 39 Upgrade Patch.zip file.
2. Copy the **Innovator** folder from the Upgrade Patch to the **Aras Innovator Code Tree** location. This will overwrite the existing **Innovator** folder and files. It is recommended that a Systems Administrator perform this step on the server.



3. Increment the filesRevision attribute in the code tree to ensure that client machines renew their caches to get all required updates.
 1. From the root of the **Code Tree**, open the InnovatorClient.config file within the \Innovator\Client folder.
 2. Change the value of the filesRevision attribute. The value should be changed from std to 2, 3, 4, etc.

```
<cachingModule moduleEnabled="true" filesRevision="2" />
```
 3. Save the changes to the InnovatorClient.config file and close it.

Important

Incrementing this attribute sends a signal to each client machine that it needs to reload the client cache the next time it connects to Aras Innovator.

4. Restart the **World Wide Web Service (IIS)** to ensure that the server renews its cache and receives all required updates.

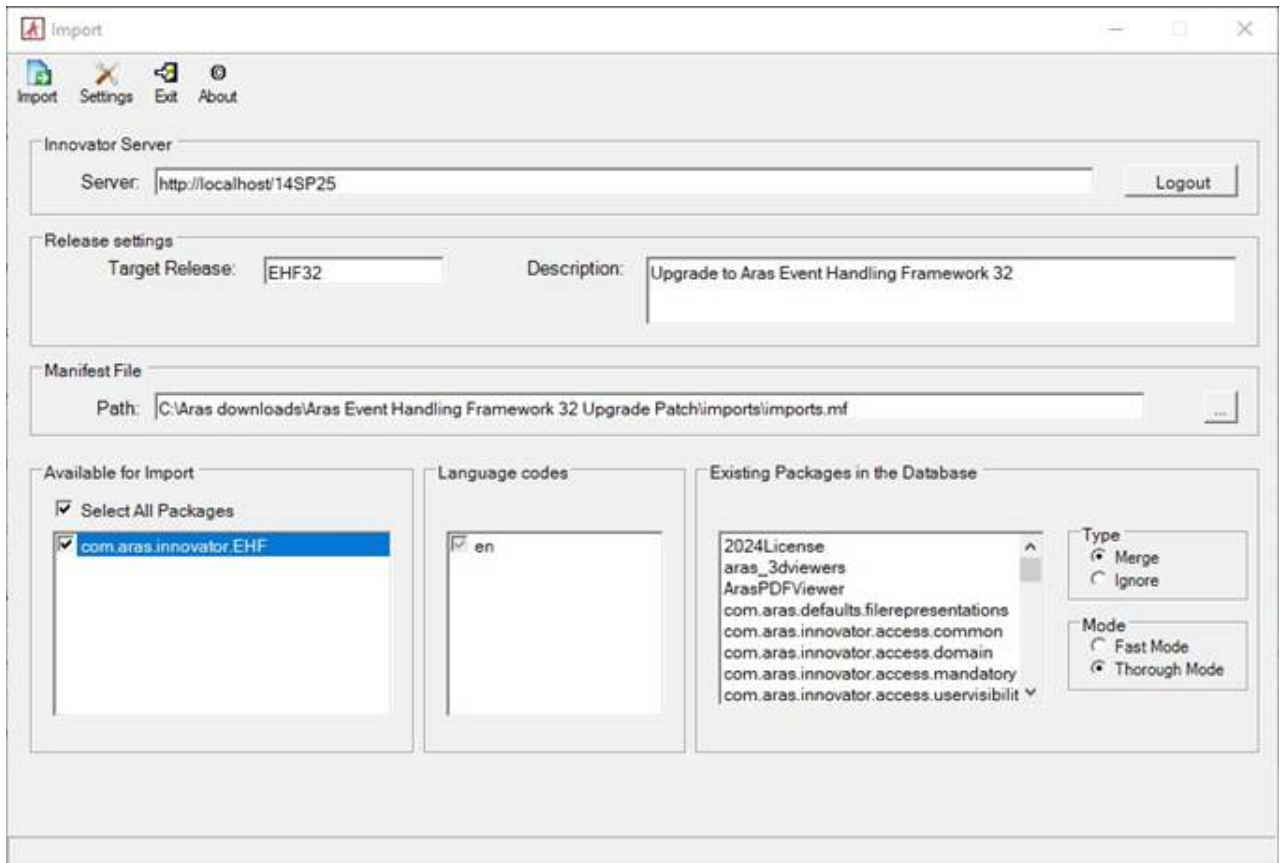


5. Use the **Package Import Export Utilities** to import the database package from the Aras Event Handling Framework 39 Upgrade Patch.zip file. For more information on using this tool, refer to the *Aras Innovator—Package Import Export Utilities* document.

Important

This import will fail if you do not have **Aras Process Engine** installed.

1. Enable the **Super User** login to perform this step.
2. Browse to the \PackageImportExportUtilities\Import\ folder and run the **Import.exe** file.



3. Input the connection information:



- **Server** = The connection URL for Aras Innovator
- **Username** = root
- **Password** = Password for “root” login (The default password used is “innovator”)
- **Target Release** = EHF39
- **Description** = Upgrade to Aras Event Handling Framework 39
- **Manifest File Path** = The manifest is found in the folder \imports\import.mf
- **Available for Import** = Select all packages
- **Type** = Merge
- **Mode** = Thorough Mode

4. Click **Import** to import the file.

5. Disable the **Super User** login once complete.

Important

The **Super User** login should not be enabled in production.

