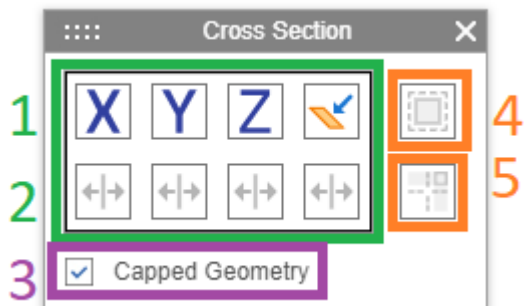


Cross Section Viewing of the CAD Model

The **Cross Section** button on the **Standard Viewing** toolbar provides access to the separate **Cross Section** toolbar.

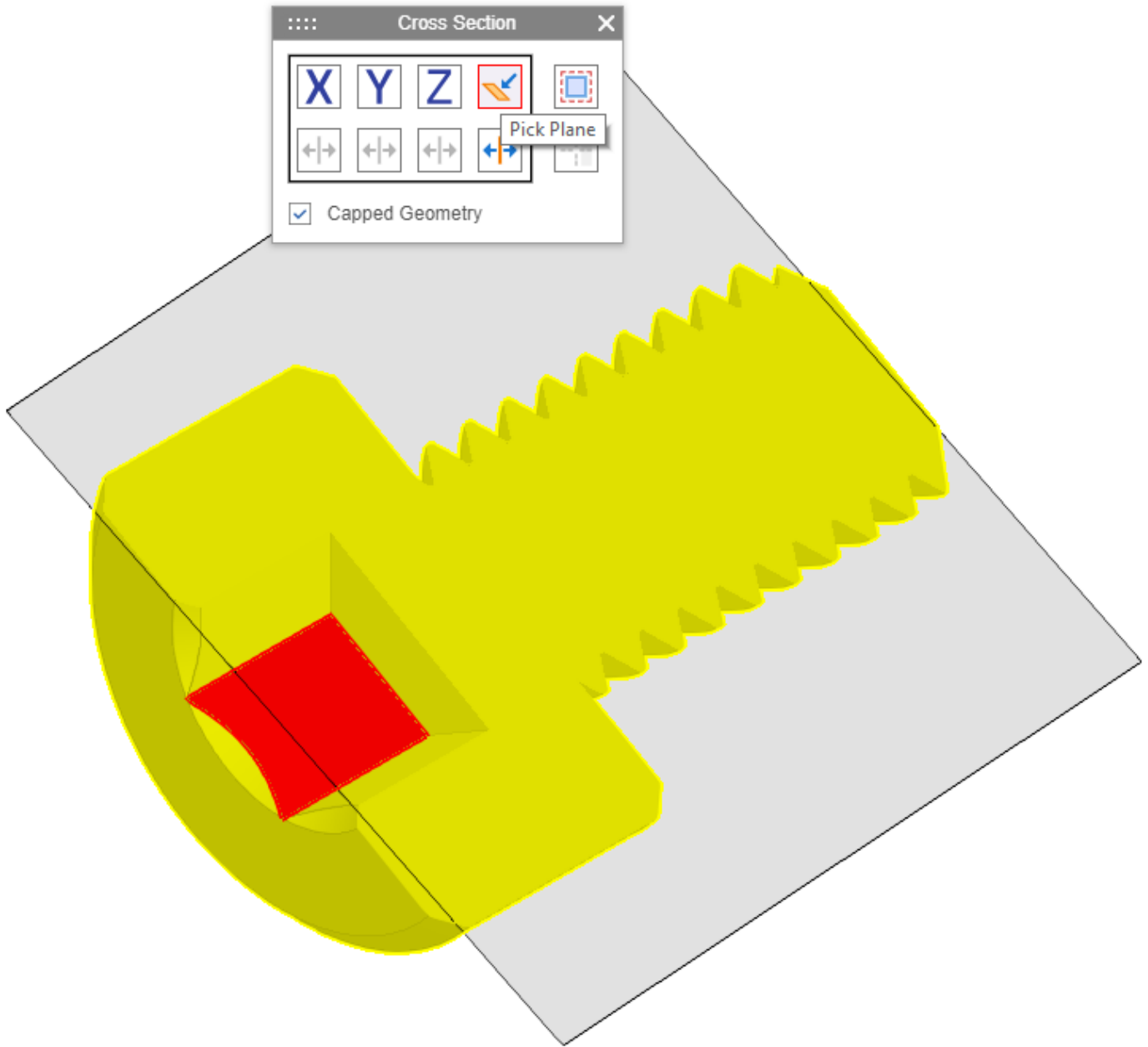


With the **Cross Section** toolbar, end users can view a 3D CAD model in sections as follows:

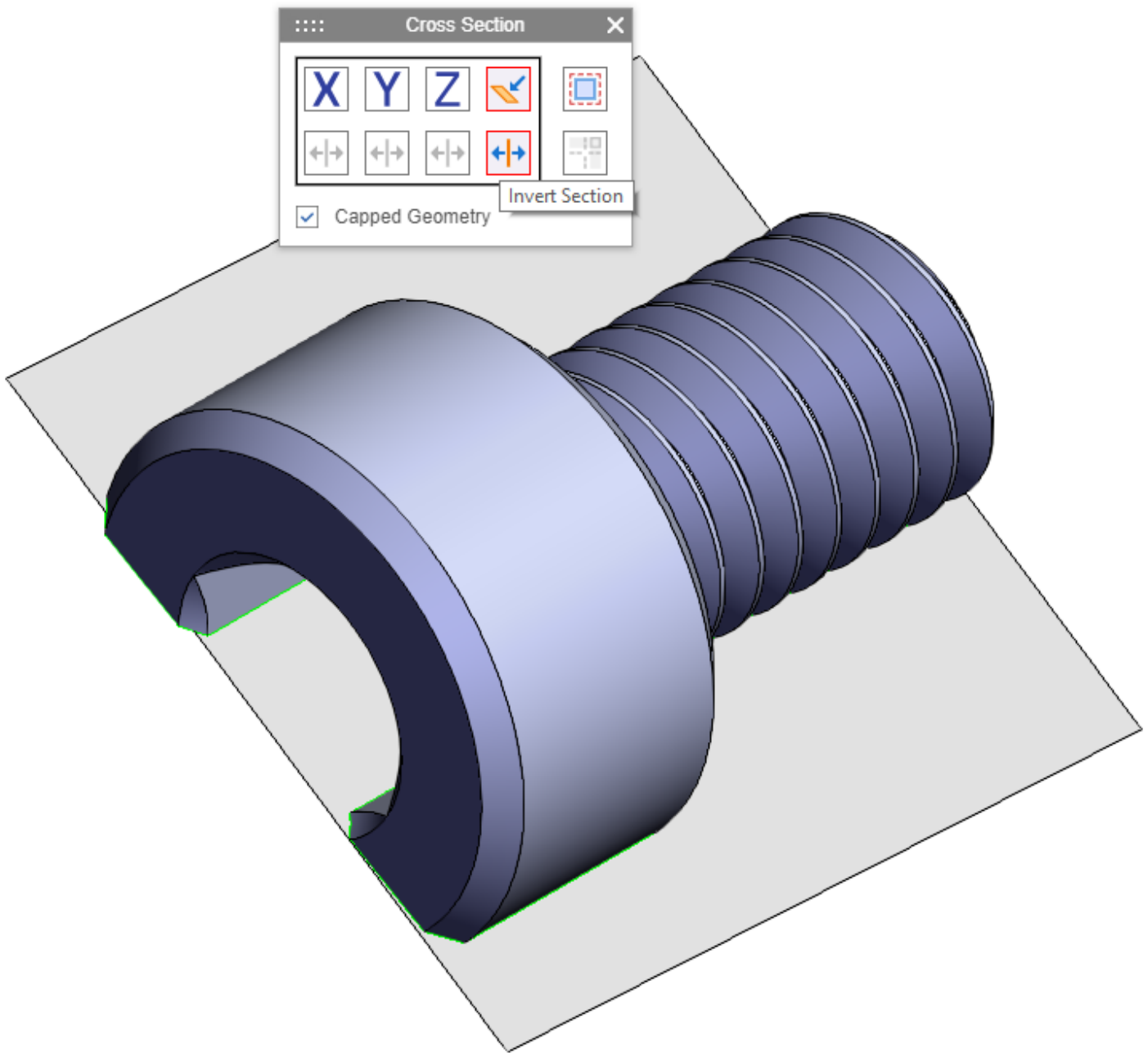


1. Model cutting plates can be specified with the set of plane buttons:
 - o The **X**, **Y**, and **Z** buttons are to set the cutting planes according to the model coordinate system.
 - o The **Pick Plane** button is to set an arbitrary cutting plane by clicking a target surface and then clicking this button.

Dragging the cutting planes cuts the model into sections.

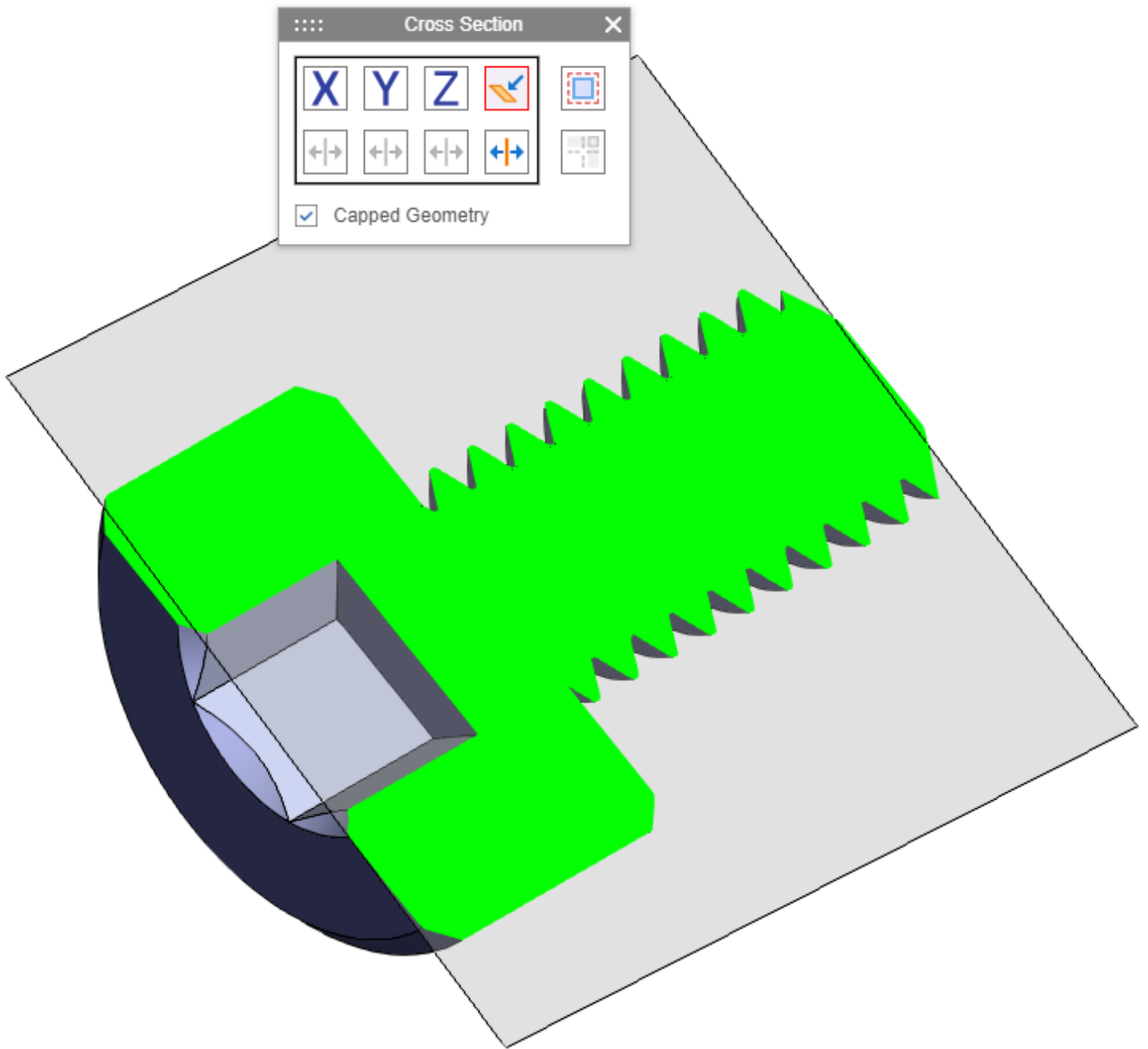


2. Each plane button includes its own **Invert Section** button to determine which of the cut sections is visible.

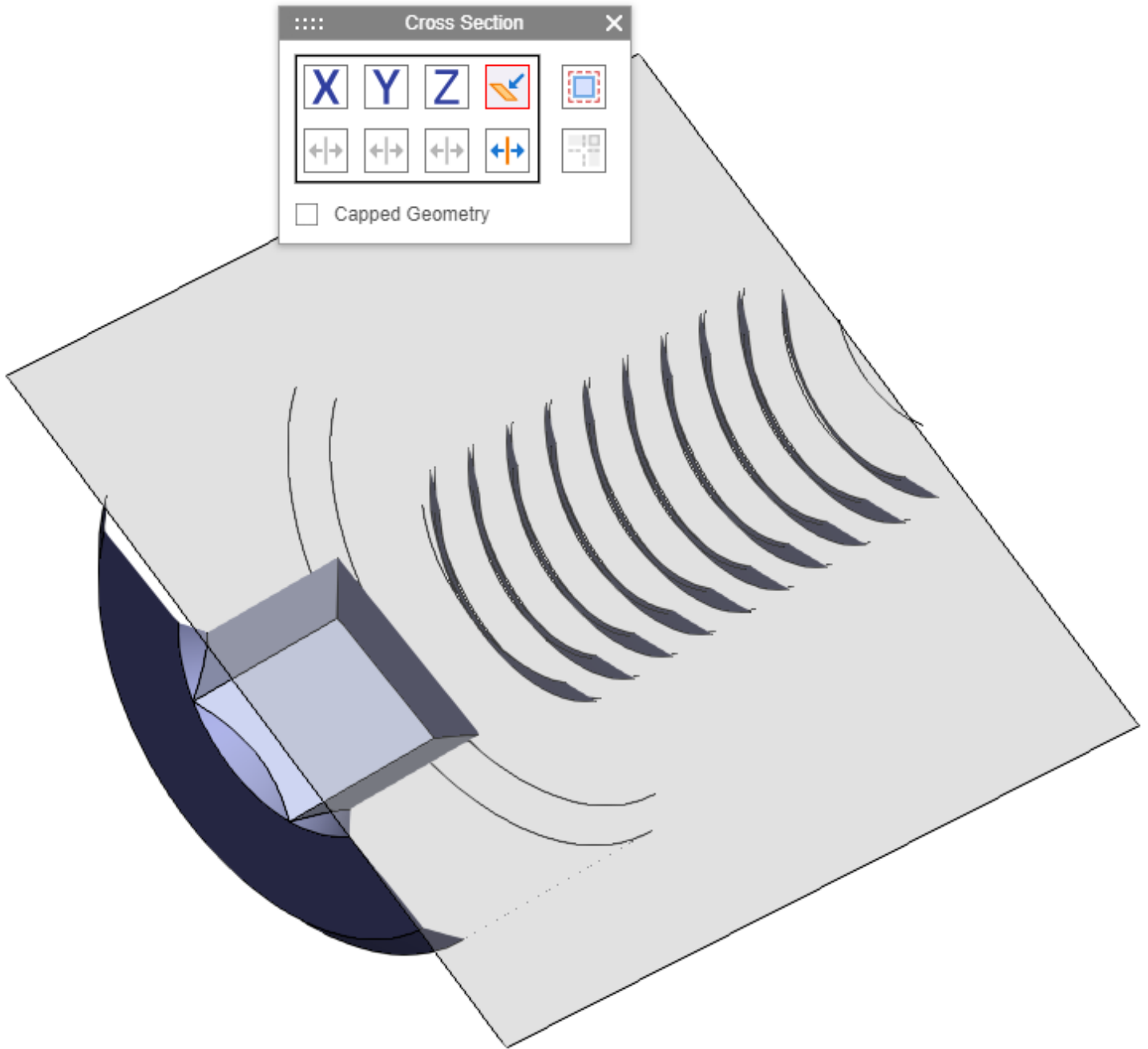


3. Selecting the **Capped Geometry** check box displays a cut section in green.

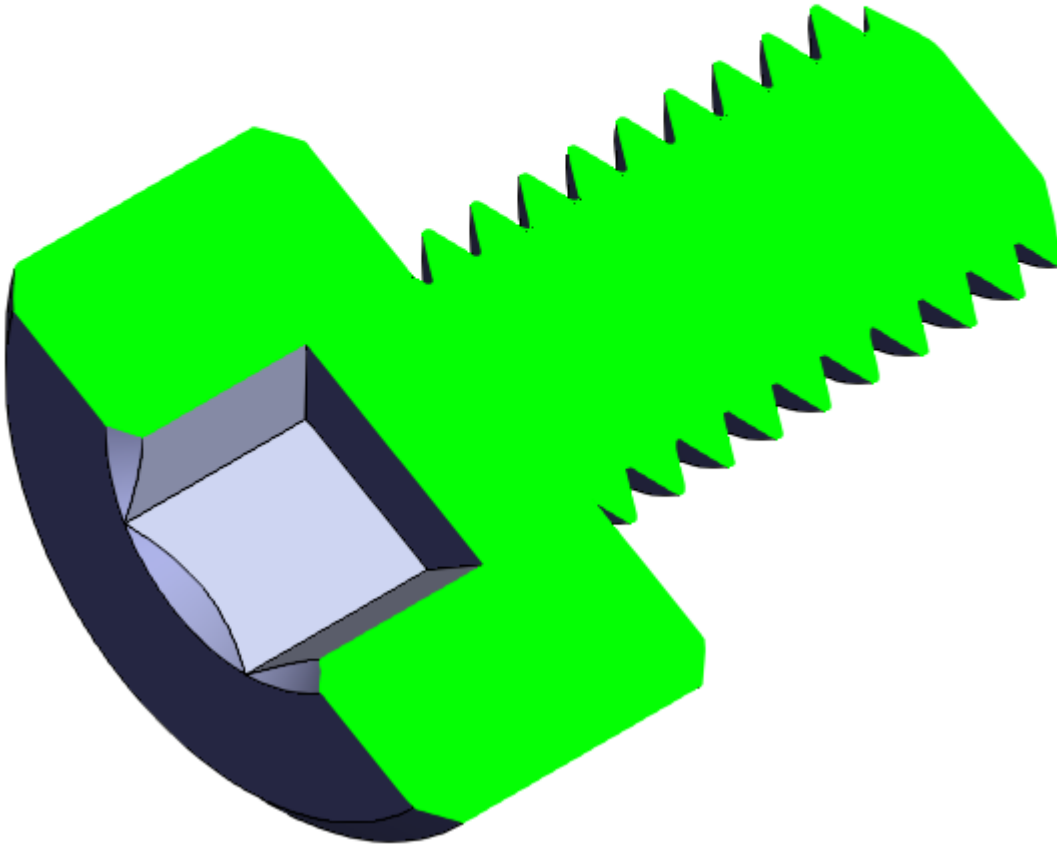
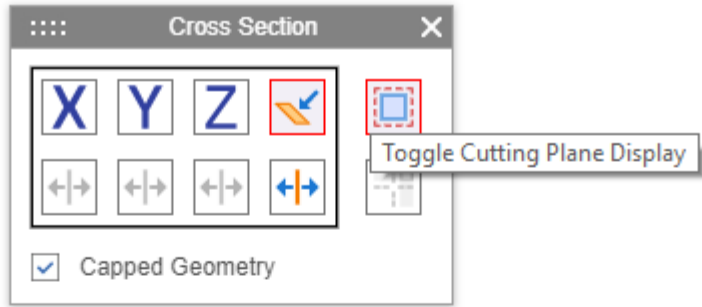




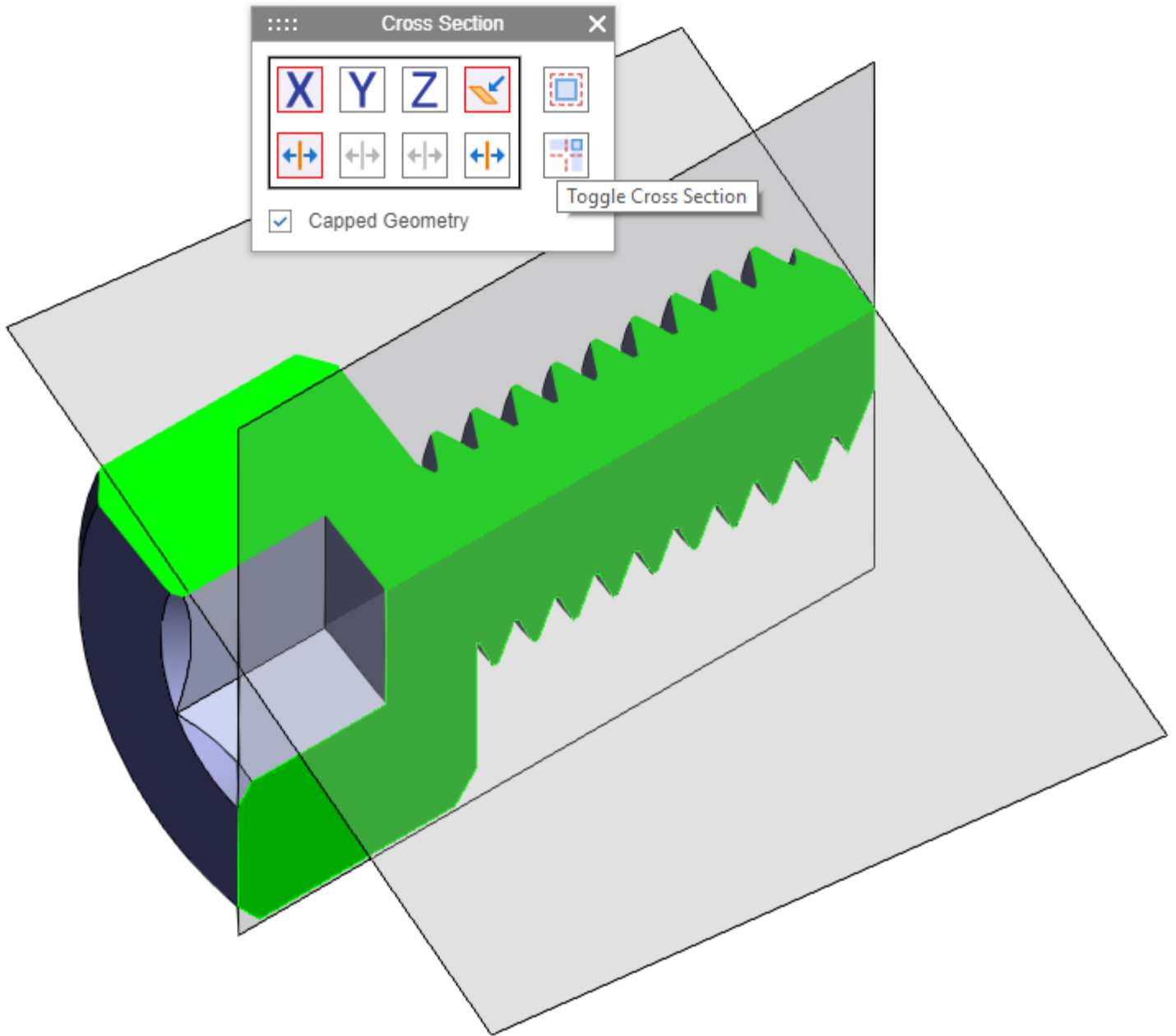
If this check box is cleared, a cut section is hollow.



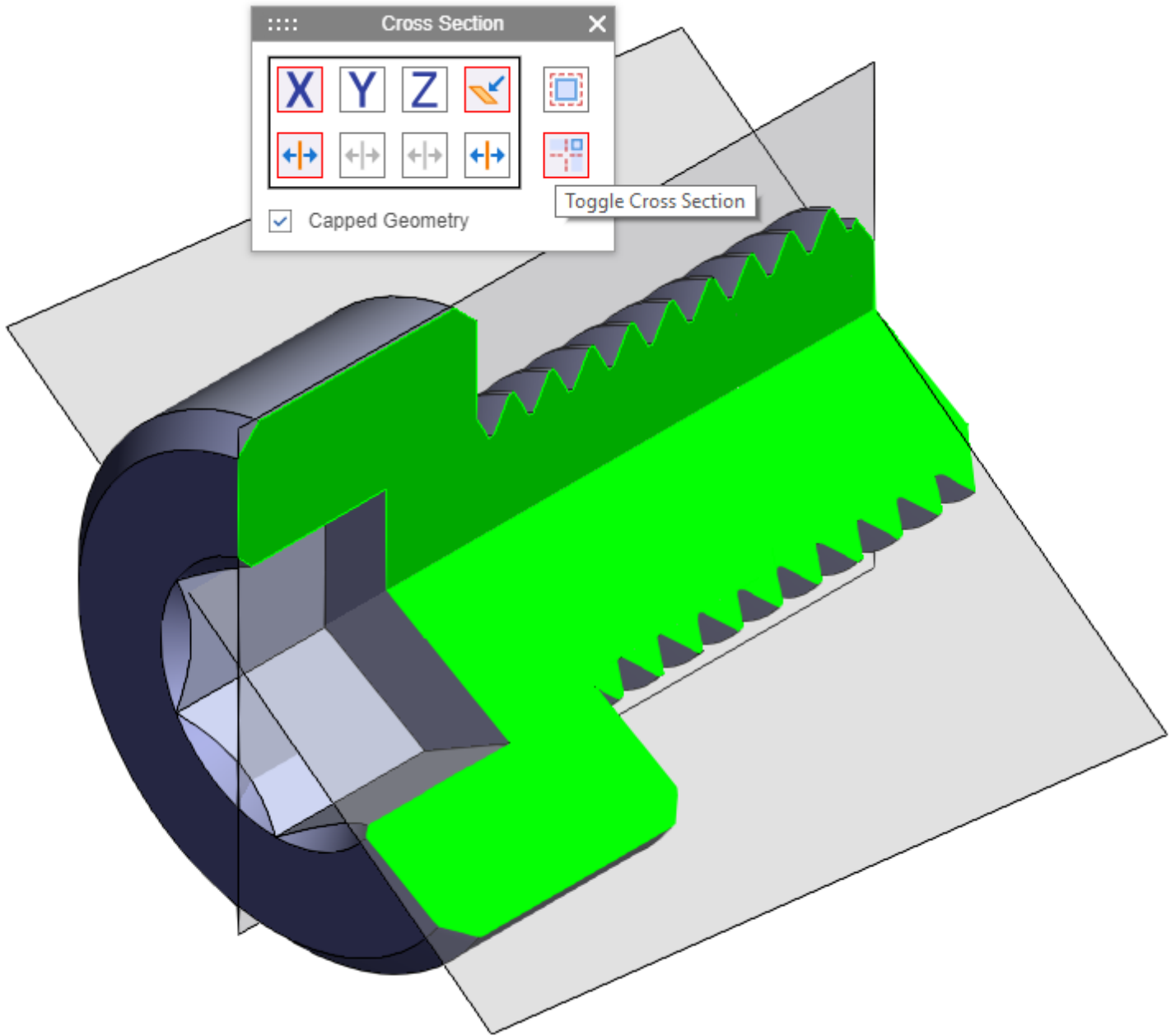
4. Clicking the **Toggle Cutting Plane Display** button hides or shows the cutting planes.



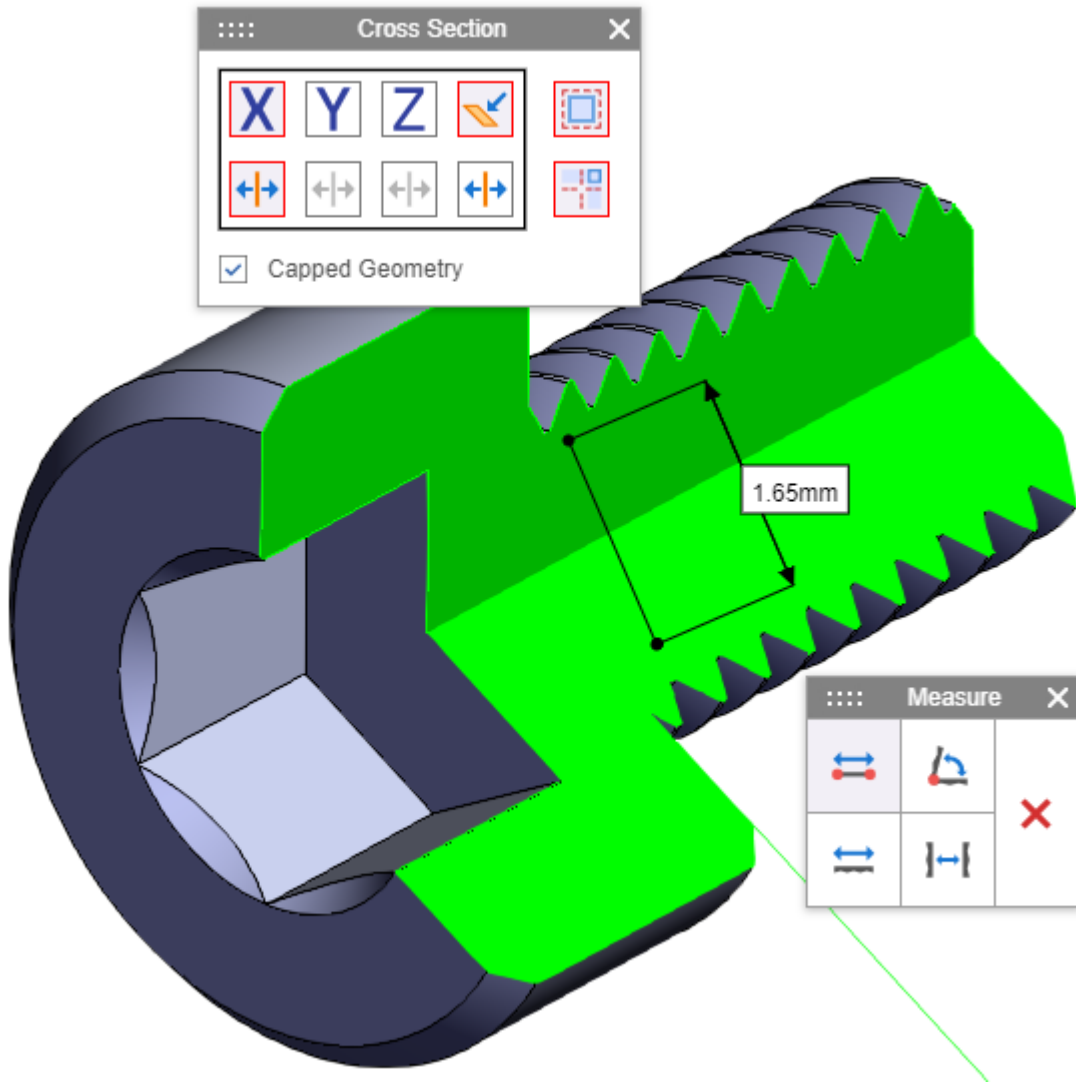
5. When using several cutting planes, the **Toggle Cross Section** button becomes available for selecting which sides of the planes can cut.



Clicking the **Toggle Cross Section** button toggles the cutting sides of the planes. This button can be combined with the **Invert Section** buttons of these planes.



To enable other viewing and markup functionality in the cross-section model view, the cutting planes should be hidden.



To quit the cross-section model view, the **Cross Section** toolbar should be closed.

