

Manual Aras Dynamic Visualization Installation

The following steps outline the process of Manual Aras Dynamic Visualization Installation:

1. In the unzipped Aras 3D Visualization 39 CD Image package, navigate to the following folder:
Aras 3D Visualization 39 CD Image\Packages\DPN
2. Copy the Innovator folder from the DPN package folder to the root Aras Innovator code tree folder that includes the Innovator folder.
3. Replace the files in the destination if the system prompts.

Important

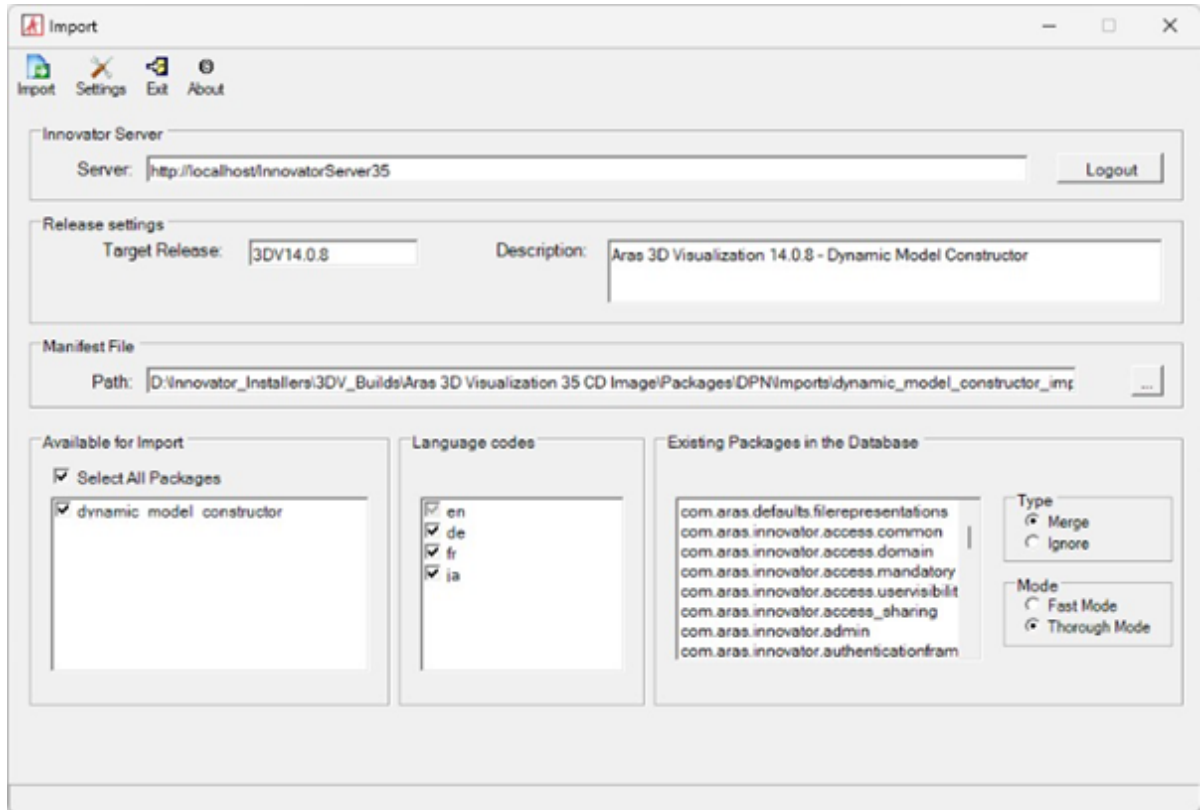
It is recommended that a server administrator performs this step.

4. In the Aras Innovator code tree, navigate to \Innovator\Server and open the method-config.xml file in a text editor run as administrator.
5. In the ReferencedAssemblies tag, add the following child name tags:

```
<ReferencedAssemblies>  
...  
<name>$(binpath)/Aras.DynamicModelViewer.Core.dll</name>  
<name>$(binpath)/Aras.DynamicModelViewer.DataModel.dll</name>  
<name>$(binpath)/Aras.DynamicModelViewer.QueryProcessor.dll</name>  
<name>Microsoft.Extensions.Logging.dll</name>  
</ReferencedAssemblies>
```
6. Save and close the method-config.xml file.
7. Restart the **Internet Information Services (IIS)**.
8. Import the Aras 3D Visualization Dynamic Model Constructor database package with the **Package Import Export Utilities**. For more information using this tool, refer to the *Aras Innovator 39 – Package Import Export Utilities* documentation.
 1. Enable the **Super User (root)** login.
 2. Browse to the \PackageImportExportUtilities\Import\ folder and run the **Import.exe** file.
 3. Input the connection information.



- **Server:** The connection URL for Aras Innovator. By default, it is <http://localhost/InnovatorServer/>.

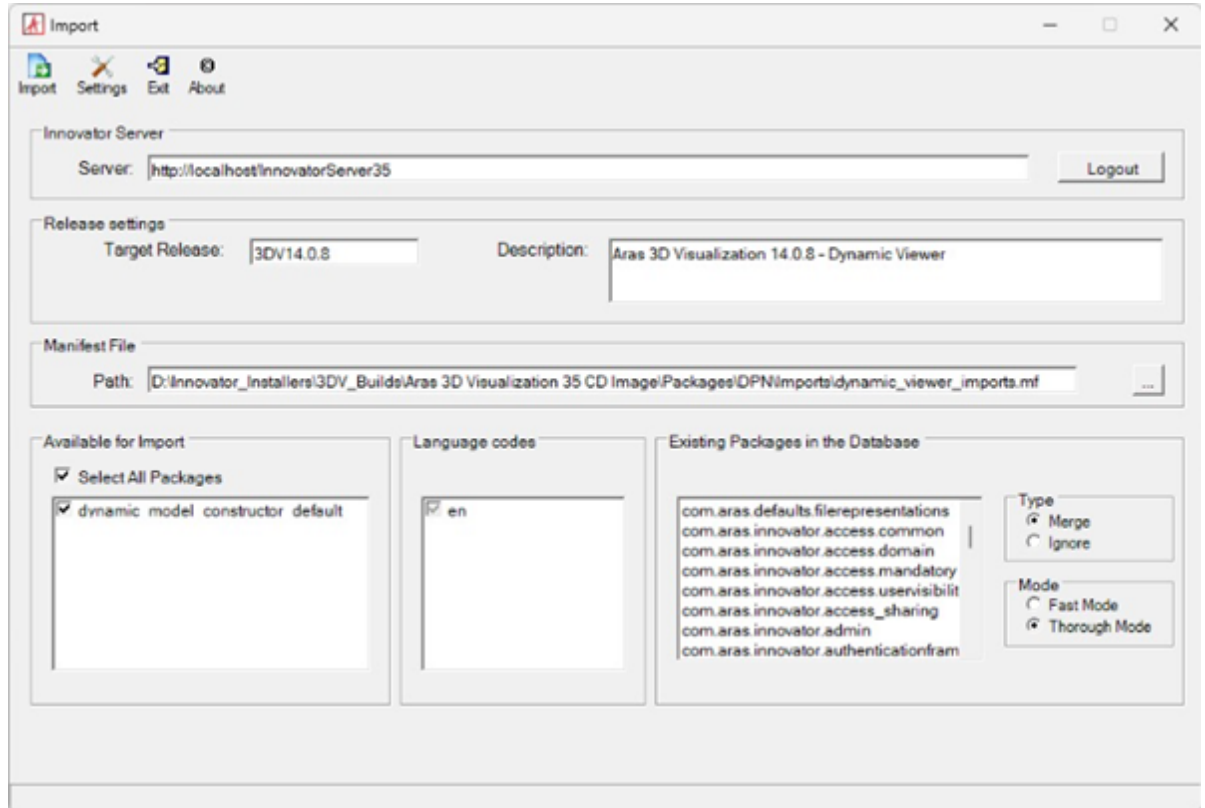


Click the **Login** button and enter:

- **Database:** The target Aras Innovator database. By default, it is InnovatorSolutions.
 - **Username:** root
 - **Password:** Password for “root” login (Default is “innovator”)
 - **Target Release:** 3DV 14.9.0
 - **Description:** Aras 3D Visualization 14.9.0 – Dynamic Model Constructor
 - **Manifest File Path:** The manifest file
\Packages\DPN\Imports\dynamic_model_constructor_imports.mf
 - **Available for Import:** Select All Packages
 - **Type:** Merge
 - **Mode:** Thorough Mode
4. Click the **Import** button.
9. Import the Aras 3D Visualization Dynamic Viewer database package with the **Package Import Export Utilities**. For more information using this tool, refer to the *Aras Innovator 39 – Package*

Import Export Utilities documentation.

1. Enable the **Super User (root)** login.
2. Browse to the \PackageImportExportUtilities\Import\ folder and run the **Import.exe** file.
3. Input the connection information.
 - **Server:** The connection URL for Aras Innovator. By default, it is <http://localhost/InnovatorServer/>.



Click the **Login** button and enter:

- **Database:** The target Aras Innovator database. By default, it is InnovatorSolutions.
- **Username:** root
- **Password:** Password for “root” login (Default is “innovator”)
- **Target Release:** 3DV 14.9.0
- **Description:** Aras 3D Visualization 14.9.0 – Dynamic Viewer
- **Manifest File Path:** The manifest file
\\Packages\DPN\Imports\dynamic_viewer_imports.mf
- **Available for Import:** Select All Packages
- **Type:** Merge



- **Mode:** Thorough Mode
4. Click the **Import** button.
10. Disable the **Super User (root)** login.

Important

The **Super User (root)** login should not be enabled in production.

11. This step is optional. Confirm the successful Aras Dynamic Visualization installation. See the *Confirming Aras 3DV Installation* section.
12. If the installation fails, restore the Aras Innovator code tree and database with the backups done before the installation and contact Aras Support at support@aras.com .

