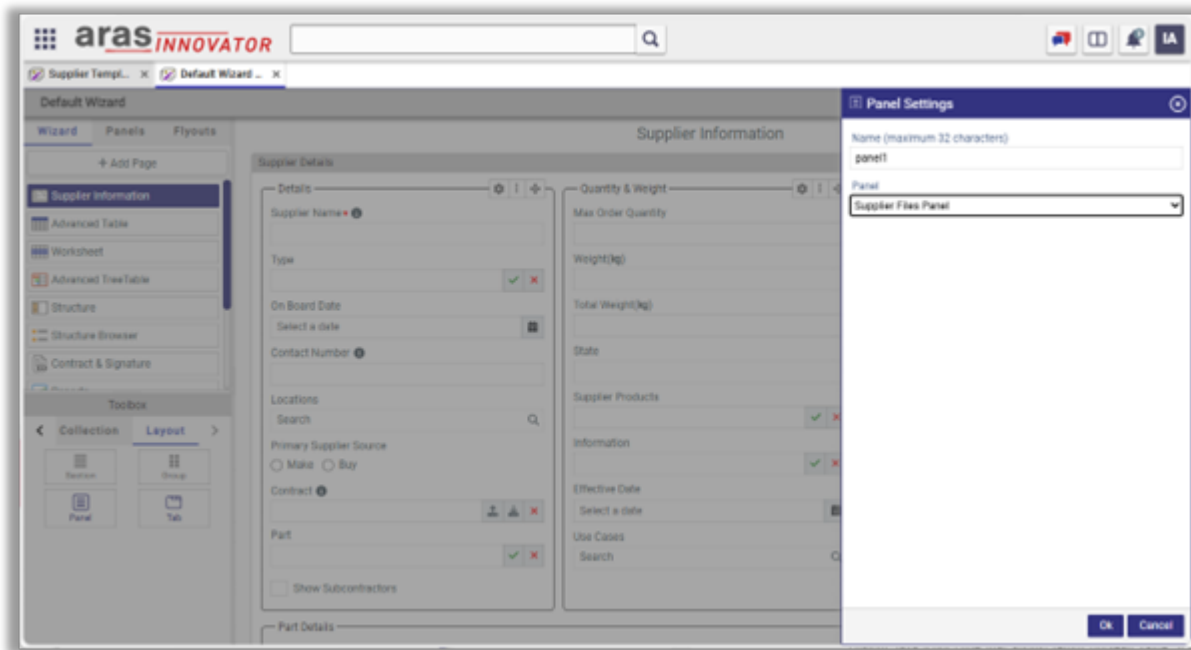


# Panel Control

Panel control is the layout control that can help you to create a complex layout on the page. Panel control allows you to use panel defined in the template inside the page layout. Panel control can be placed inside group control just like any other control.



- **Name:** It is used to uniquely identify control inside the template.
- **Panel:** It shows a list of defined panels in the template. You can select one of the panels that can be referenced by this control.

