

Automated Aras 3DV Installation for Streaming Viewer

Important

Please note that the output files of Dynamic/Monolithic Viewer and Streaming Viewer are incompatible with one another. If the Streaming 3D Viewer is installed in an environment where the Monolithic or Dynamic 3D Viewers have been previously installed and used, all existing native files of existing CAD Documents need to be re-converted. There is no automated means to perform this reconversion.

Important

Only one Streaming Viewer can be installed on one machine at a time.

Important

The Streaming Viewer currently cannot be deployed in a cloud environment. The HOOPS Server must be deployed with networked file access to a single vault containing view files for rendering.

The following steps outline the process of Aras 3DV installation for Streaming Viewer:

1. Download the **Aras 3D Visualization 35 CD Image** from the Aras File sharing site, and unzip the file on the local computer.
2. Enable the **Super User (root)** login.
3. Please confirm that the **Aras.CADConverter3** license is activated.
4. Launch the **ArasUpdate.exe** file as an administrator.
If default options were selected during installation, the **ArasUpdate.exe** file is found in the directory `C:\Program Files (x86)\Aras\Aras Update\`.
5. On the **Local** tab, click **Add package reference** and navigate to the folder where the **Aras 3D Visualization** package was extracted in the first step.
6. Expand the **Aras 3D Visualization** package and click **Install**.



The screenshot shows the 'Aras Update' application window. The title bar reads 'Aras Update'. The main header features the 'aras UPDATE' logo. On the left, there is a sidebar with 'Online' and 'Local' options, where 'Local' is selected. The main content area is titled 'Aras Packages available locally' and includes a search bar. Below the title, there is a paragraph of instructions: 'Listed below are all Aras packages available on local disk. Select a desired package version, then pick Install to immediately install. You can also add a local package reference to install. To install Aras subscriber-only features such as Service Packs, first download the package from the Aras FTP site and then use the "Add package reference" option.' A dashed box highlights an '+ Add package reference' button. Below this, a package card for 'Aras 3D Visualization' is shown, with a description: 'Provides the ability to convert and visualize native 3D CAD files.' Underneath the description, there is a radio button selected for 'Release 33 (14.0.7) (Reference package)'. At the bottom right of the package card, there are two buttons: 'Install' and 'Remove from list'.

7. Select the installation modules of the Aras 3D Visualization components that will be installed on the given machine and click **Next**.



Aras 3D Visualization Release 33 (14.0.7) requires the following components for proper installation. Select the components you intend to install.

Computer name: ARAS-CORP/AC5CG3221VKB

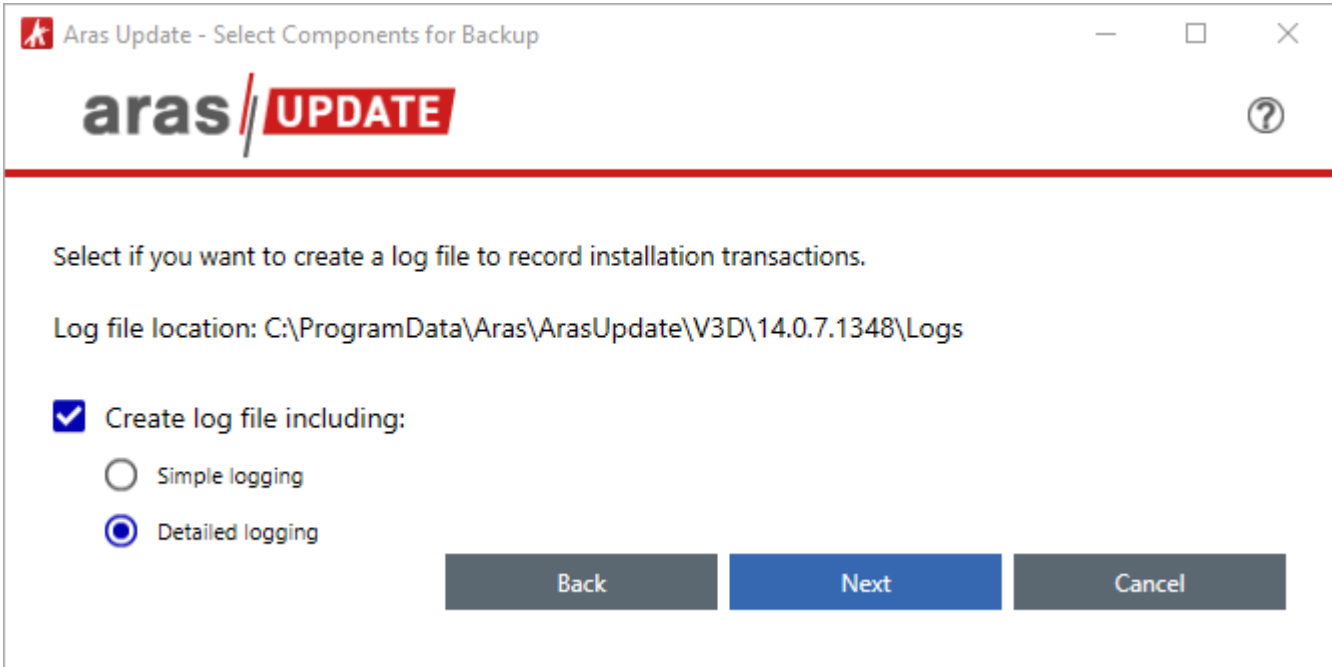
- Aras CAD Converter**
Provides the ability to convert native 3D CAD files for use with 3D Viewers.
- Aras CAD Converter Database Updates**
Import to Innovator Database.
- Aras 3D Viewers**
Provides core 3D Visualization functionality for Monolithic and Dynamic 3D Viewers.
- Aras 3D Viewers Database Updates**
Import to Innovator Database.
- Aras Dynamic Visualization**
Provides the ability to configure 3D and Tree Grid Views for the Dynamic 3D Viewer based on selected Query and Dynamic View Definitions.
- Aras Dynamic Visualization Database Updates**
Import to Innovator Database.
- Hoops Server**
Provides the ability to use HOOPS Communicator server-side streaming for geometry data.

Back

Next

Cancel

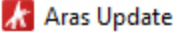
8. Select the **Detailed logging** option and click **Next**.




The logging option records the installation attempt and can be used to troubleshoot issues.

9. Specify the connection information for the installation modules of the components to be installed:



 Aras Update
— □ ×


?

Enter the following parameters for each component you are going to install and then click Install button to continue.

✓ Aras CAD Converter
^

Path to root folder where Innovator Server is installed

Browse...

Specify local directory where HOOPS Converter should be installed (example: 'C:\HOOPS Converter')

Browse...

Use streaming SCZ by default

✓ Aras CAD Converter Database Updates
^

Server URL (example - 'http://localhost/InnovatorServer')

http://localhost/InnovatorServer33

Database Name (example - 'InnovatorSolutions')

InnovatorSolutions33
▼

Username (should use 'root' User)

root

Password for 'root' User

.....

✓ Aras 3D Viewers
v

✓ Aras 3D Viewers Database Updates
v

✓ Aras Dynamic Visualization
v

✓ Aras Dynamic Visualization Database Updates
v

✓ Hoops Server
^



Path to the folder where HOOPS Server should be installed

C:\HOOPS Server Browse...

Hostname of the machine where HOOPS Server should be installed

AC5CG3221VKB

Path to the vault folder for corresponding Innovator instance

D:\Aras\Vault\InnovatorSolutions33 Browse...

Back Install Cancel

Component CAD Converter Updates:

- **Path to root folder where Aras Innovator Server is installed:** The physical path to the Aras Innovator code tree. See the *Aras Innovator Code Tree* section.
- **Specify local directory where HOOPS Converter should be installed:** The physical path to a local folder where HOOPS Converter files will be installed; for example, C:\HOOPS Converter.

Important

When installing the Streaming Viewer, the **Use streaming SCZ by default** field should be checked otherwise leave it unchecked.

Important

If the **Use streaming SCZ by default** checkbox is checked, and the Streaming Service is not installed, none of the other viewers will work.

Component Database Updates:

- **Server URL:** The URL for connecting to a given Aras Innovator instance. By default, it is http://localhost/InnovatorServer/.
- **Database Name:** The name of a target Aras Innovator database. By default, it is InnovatorSolutions.
- **Username:** root
- **Password for 'root' User:** The password for the root User. By default, it is innovator.

Hoops Server:

- **Path to the folder where HOOPS Server should be installed:** The physical path to a local folder where HOOPS Server files will be installed; for example, C:\HOOPS_Server.



- **Hostname of the machine where HOOPS Server should be installed:** The hostname of a local machine where HOOPS Server will be installed.
- **Path to the vault folder corresponding Aras Innovator instance:** The physical path to the vault folder of the Aras Innovator instance.

Important

The Streaming Viewer is supported only with a single vault. The Streaming Viewer service must be installed on a machine with a direct network access to the vault.

If multiple Aras 3D Visualization components are installed, connection settings for the following components are automatically inherited from the preceding ones. For example, if Aras 3D Viewers is installed with Aras CAD Converter, the Aras 3D Viewers modules inherit connection settings from the Aras CAD Converter modules.

10. Once the connection information is provided, click **Install**. The installation process begins.



Installation is in progress. Please, wait...



Installing...

[Show log file](#)

Cancel

11. Once the installation is successfully completed, close Aras Update.



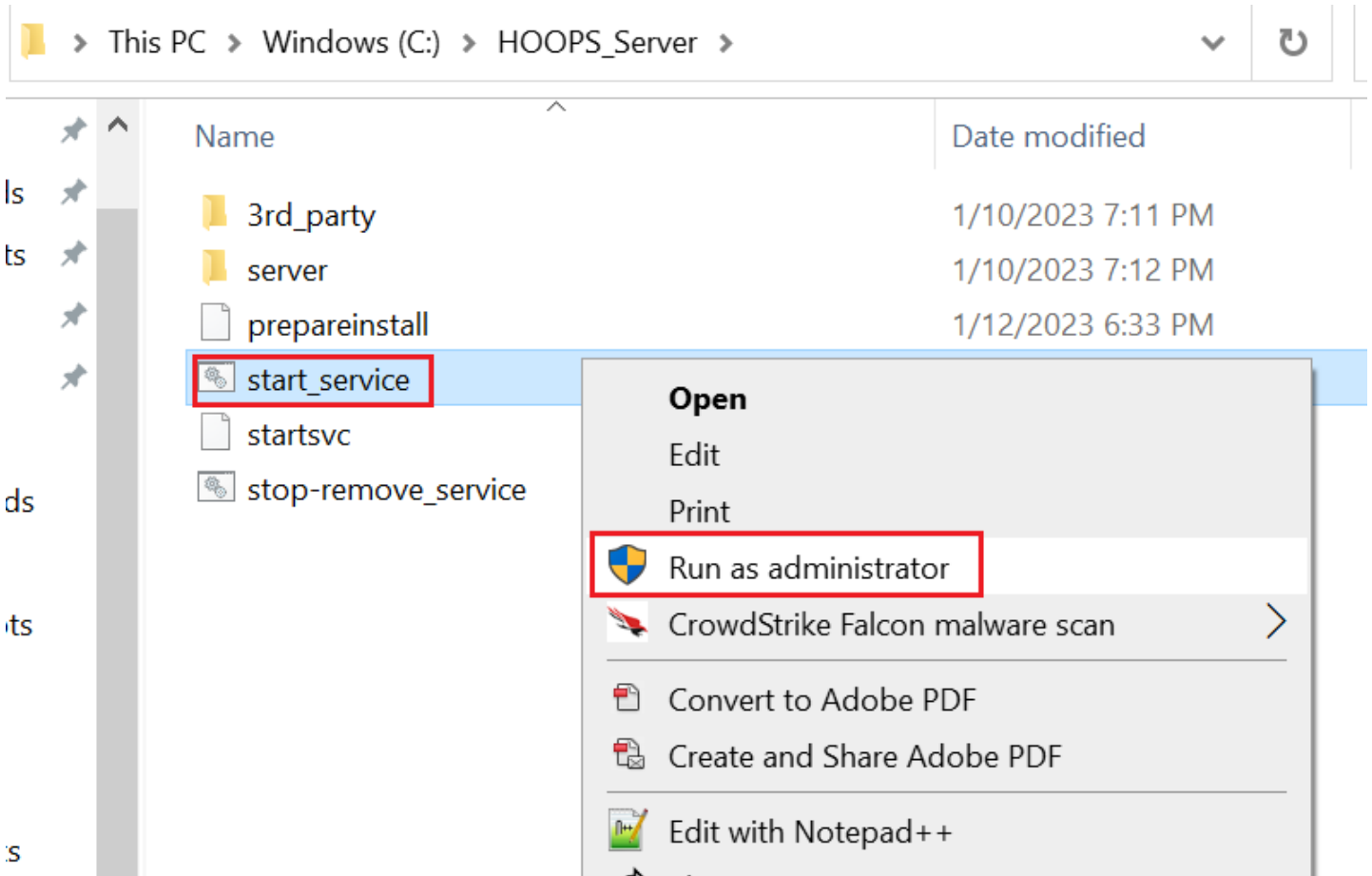
Installation completed successfully!

[Show log file](#)

Home

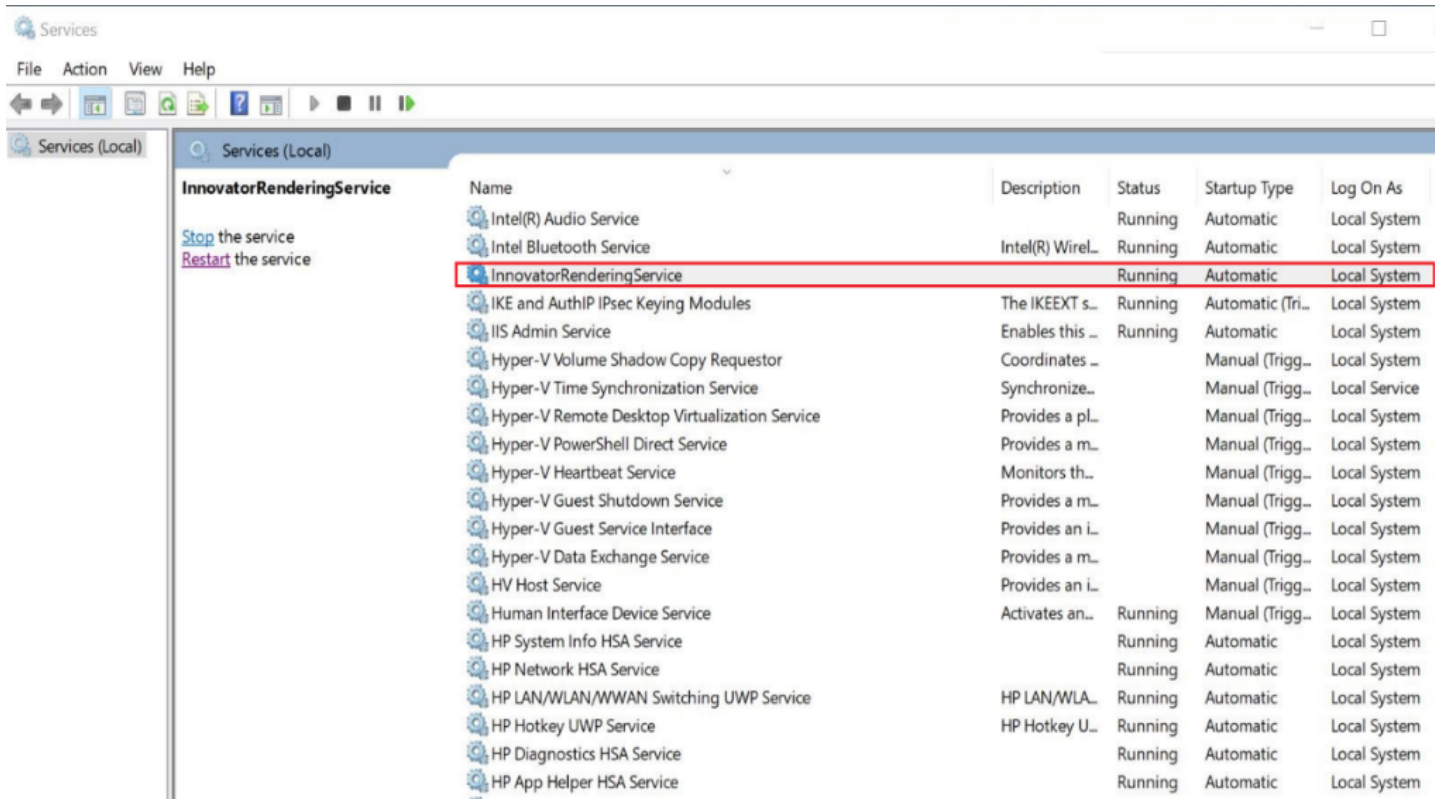
Exit

12. On the C drive in the **Hoops Server** file, right-click **start_service** and select **Run as Administrator**.



13. Open Windows **Services** and ensure that **InnovatorRenderingService** is added and running.





14. Disable the **Super User (root)** login.
15. For the required setup to get the streaming viewer running, refer to the *Administrative Configuration for Streaming Viewer* section.
16. This step is optional. Confirm the successful Aras 3D Visualization installation. See the *Confirming Aras 3DV Installation* section.

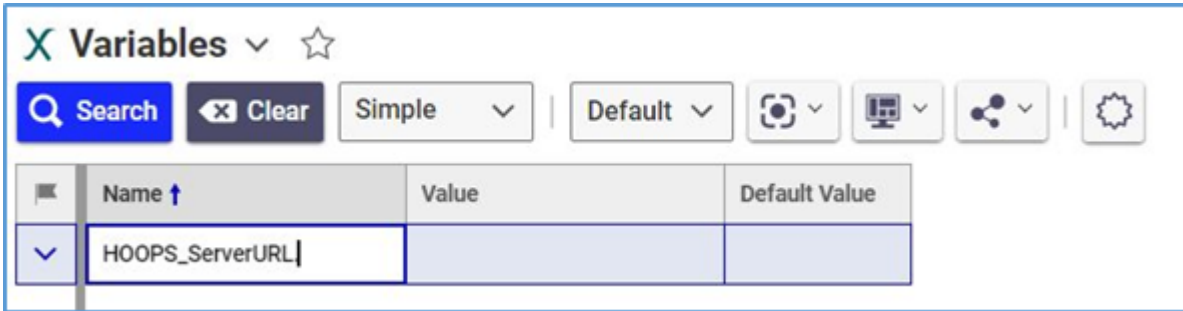
If the installation fails, restore the Aras Innovator code tree, Conversion Server, and database with the backups done before the installation and contact Aras Support at support@aras.com.

Administrative Configurations for Streaming Viewer

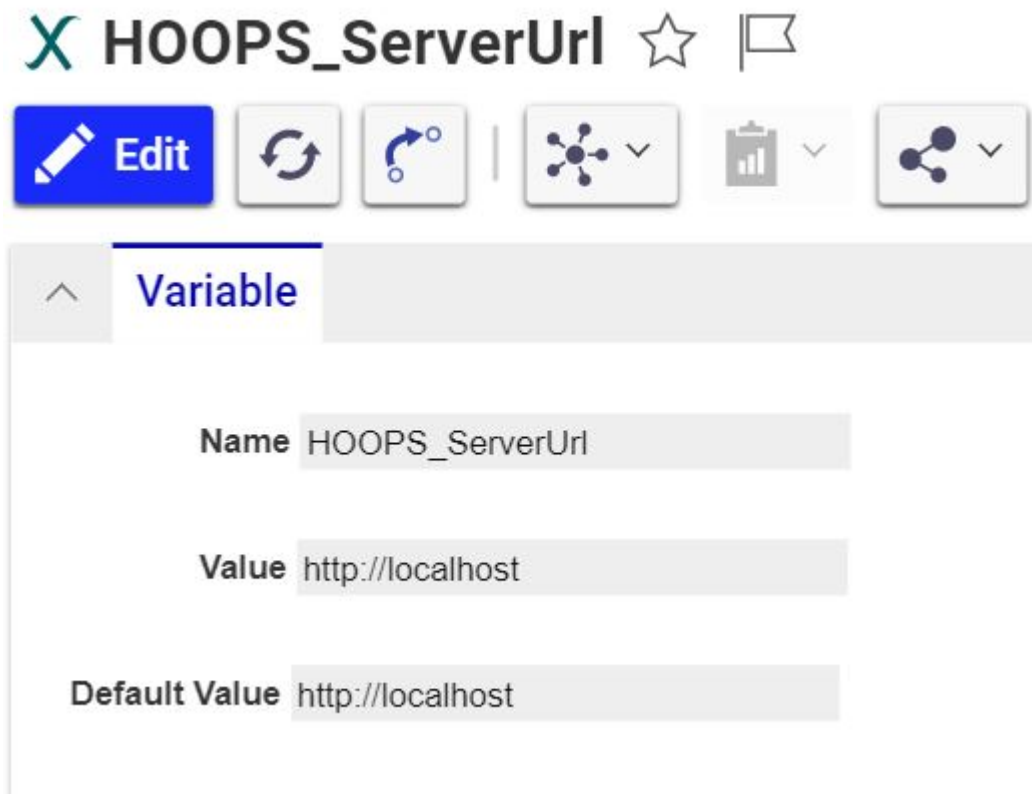
The following steps outline the administrative setup to get the Streaming Viewer running:

1. Login into the Aras Innovator as **Administrator**.
2. From **Table of Contents**, expand **Administration** and select **Variables**.
3. Click **Search Variables** and search for **HOOPS_ServerURL**.





The HOOPS_ServerURL form appears.



4. In **Value** field, replace **http://localhost** with http://IP_Address:11182

where,

- **IP_Address**: IP Address of the machine where the Streaming Viewer is installed.
- **11182**: Default Hoops Server Port Number.



X HOOPS_ServerUrl ☆ 🚩

Save Done Discard ↻

Variable

Name HOOPS_ServerUrl

Value http://10.6.75.157:11182

Default Value http://localhost

Important

The port number 11182 in HOOPS_ServerURL should be the same as the spawnServerPort parameter value in the HOOPS Server\server\node\Config.js.

There is no change to the Default Value field.

5. Click **Done** to save the changes.

Important

If the server where Streaming Viewer is installed has Graphic Processing Unit (GPU), then the **windowsServiceRespawnEnabled** parameter in the Config.js file should be set to **False**.

