

# Manual Aras 3D Viewers Installation

The following steps outline the process of manual Aras 3D Viewer:

1. In the unzipped Aras 3D Visualization 39 CD Image package, navigate to the following folder:  
Aras 3D Visualization 39 CD Image\Packages\3DViewers
2. Copy the Innovator folder from the 3DViewers package folder to the root Aras Innovator code tree folder where the Innovator folder exists.
3. Replace the files in the destination if it is prompted.

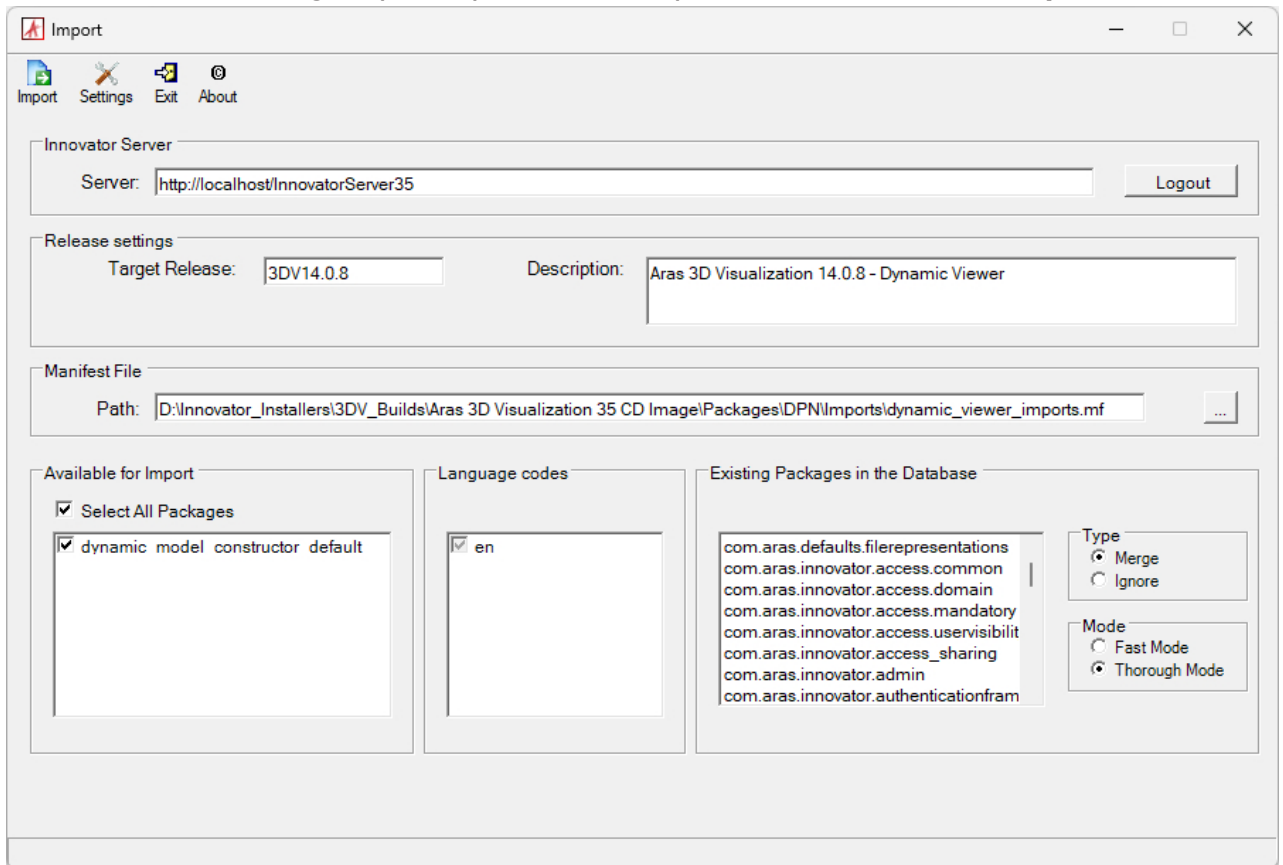
## Important

It is recommended that a server administrator performs this step.

4. In the Aras Innovator code tree, navigate to \Innovator\Client and open the InnovatorClient.config file in a text editor run as an administrator.
5. In the cachingModule tag, change the value of the filesRevision attribute from std to 2. If it is already an integer, change it to a next higher value; for example, from 2 to 3:  
<configuration>  
...  
<cachingModule moduleEnabled="true" filesRevision="2" />  
...  
</configuration>  
Such value modification reloads the cache. If the cache is not reloaded after the Aras 3DV installation, the Aras 3DV UI may not be displayed correctly; for example, icons can be absent.
6. Save and close the InnovatorClient.config file.
7. Import the Aras 3D Visualization 3D Viewers database package with the **Package Import Export Utilities**. For more information using this tool, refer to the *Aras Innovator 39 – Package Import Export Utilities* documentation.
  1. Enable the **Super User (root)** login.



2. Browse to the \PackageImportExportUtilities\Import\ folder and run the **Import.exe** file.



3. Input the connection information.

- **Server:** The connection URL for Aras Innovator. By default, it is <http://localhost/InnovatorServer/>.

Click the **Login** button and enter:

- **Database:** The target Aras Innovator database. By default, it is InnovatorSolutions.
- **Username:** root
- **Password:** Password for “root” login (Default is “innovator”)
- **Target Release:** 3DV 14.9.0
- **Description:** Aras 3D Visualization 14.9.0 – 3D Viewers
- **Manifest File Path:** The manifest file \Packages\3DViewers\Imports\imports.mf
- **Available for Import:** Select All Packages
- **Type:** Merge
- **Mode:** Thorough Mode

4. Click the **Import** button.



8. Disable the **Super User (root)** login.

**Important**

The **Super User (root)** login should not be enabled in production.

9. This step is optional. Confirm the successful Aras 3D Viewers installation. See the *Confirming Aras 3DV Installation* section.

10. If the installation fails, restore the Aras Innovator code tree and database with the backups done before the installation and contact Aras Support at [support@aras.com](mailto:support@aras.com) .

