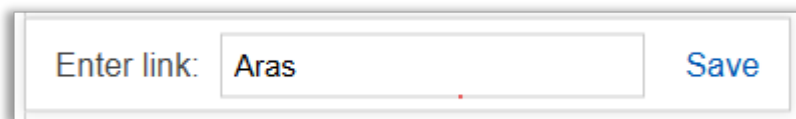


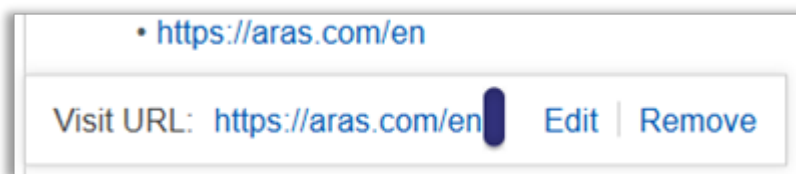
RichText Control Toolbar:



Hyperlink can be inserted in RichText control by highlighting the text and clicking on the null icon from toolbar. Then it shows pop-up as shown below to set link for the selected text.

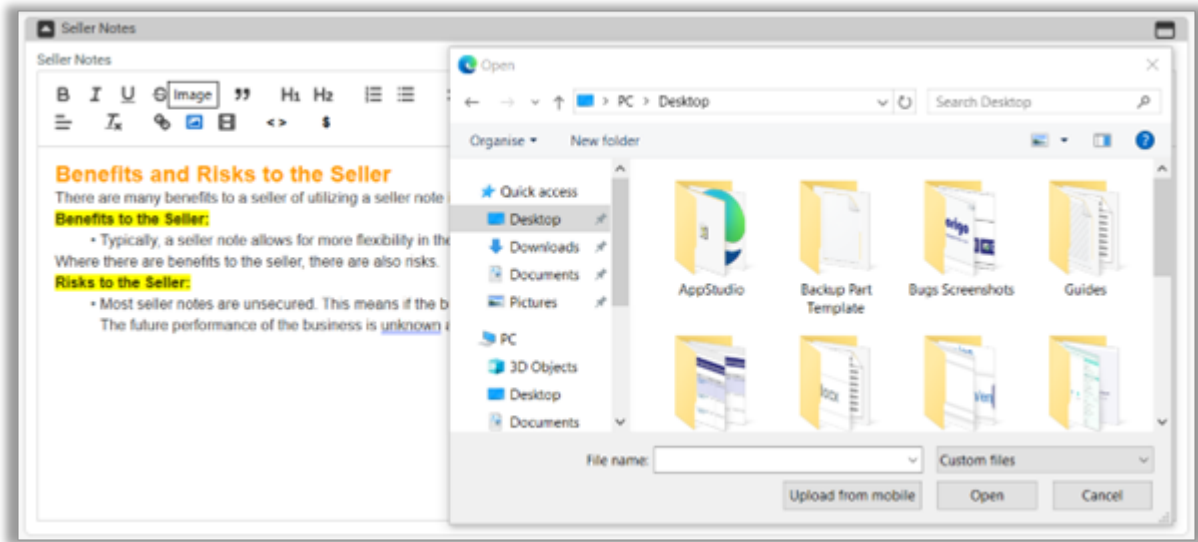


By clicking on the linked text, it shows the options to edit the current link or to remove link all together.

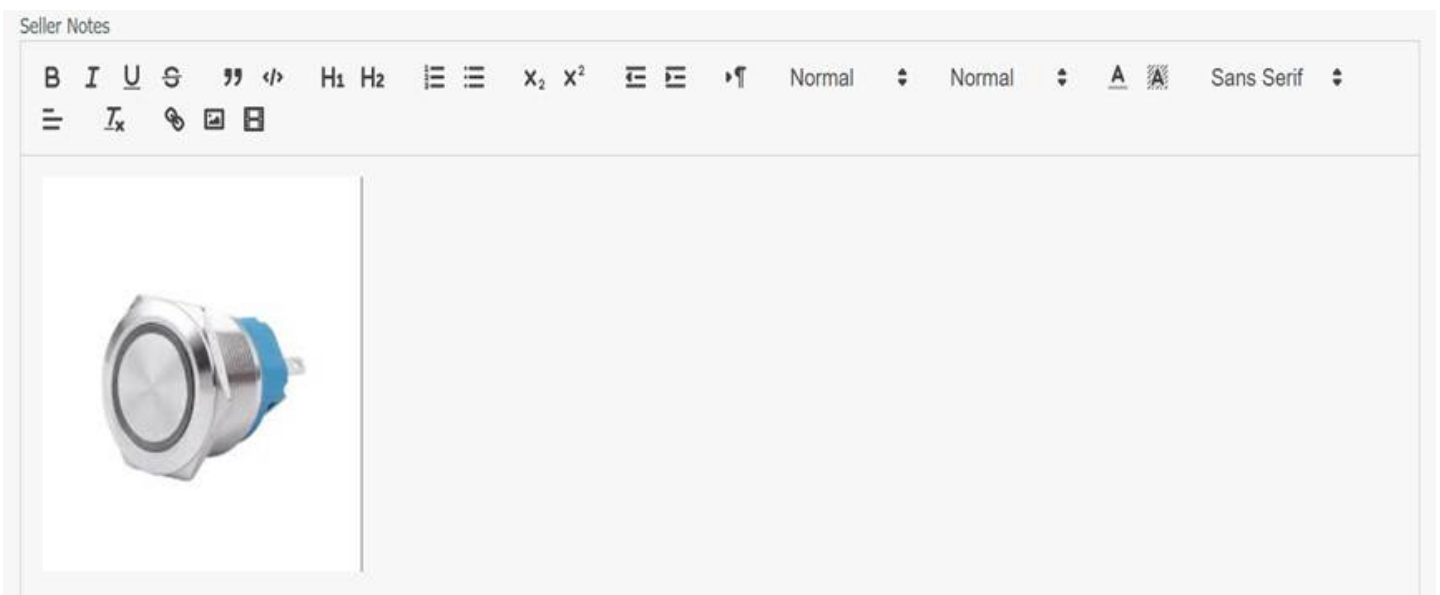


Picture can be inserted in RichText control at the current position of the cursor by selecting null icon from the toolbar. Then file browser dialog comes up in order to select the picture from the local directory.





The selected picture is displayed in the RichText control at the current cursor position.



Raw HTML command from the toolbar will allow you to set any custom HTML as content for the RichText control. Selecting Insert Symbol command will show Select Symbol flyout, for inserting a symbol at the cursor position.



