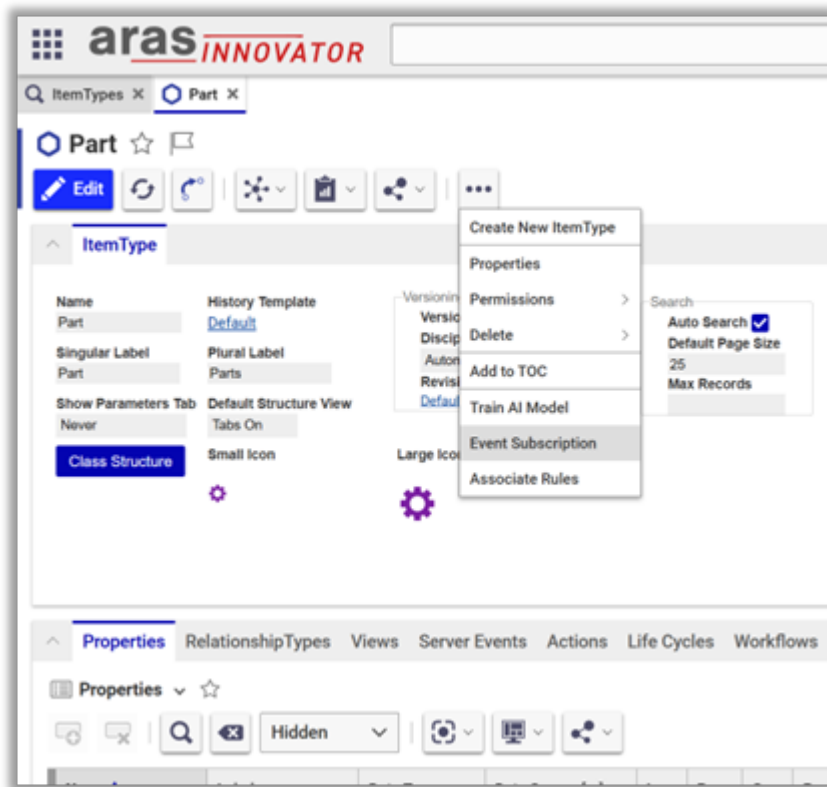
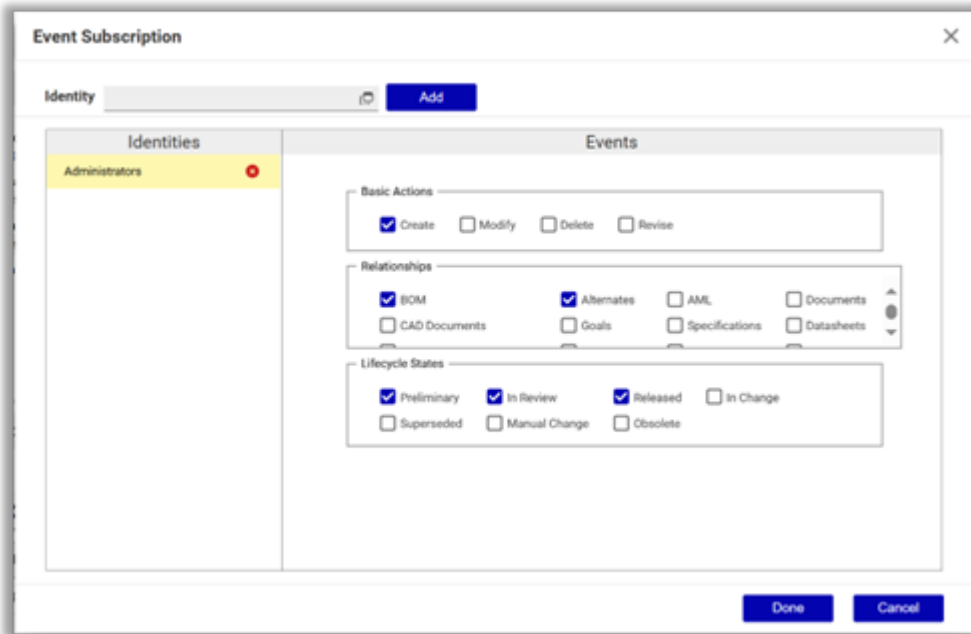


Configure Subscriptions on an ItemType

Once subscription is enabled on an ItemType, the administrator can utilize the **Event Subscription** action to configure admin-level subscriptions.



- This will open the below dialog box.



- When this dialog box is loaded, it automatically populates the list of identities along with their corresponding subscriptions.
- Admin user can add the new Identity (Alias or Non-alias) using the *Add* button.
- Admin user can select the Identity on left panel and add the events subscription on right panel.
- Admin user can update the event selections for the selected Identity.
- Admin user can remove/delete the selected Identity from admin subscriptions.
- Clicking on *Done* button saves the final state of event subscriptions for all identities into the system and closes the dialog box.
- Clicking on *Cancel* button will abort the operation and close the dialog box.

