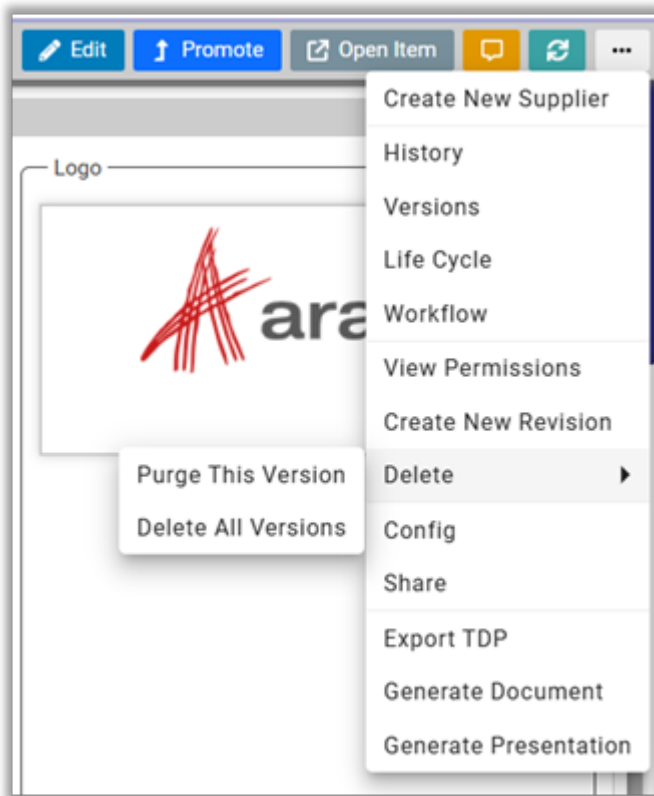


Wizard Actions

Wizard actions are shown in the wizard in the top-right corner when the item is opened. When you open item in read-only mode, you will see actions like Edit, Promote and Open Item.

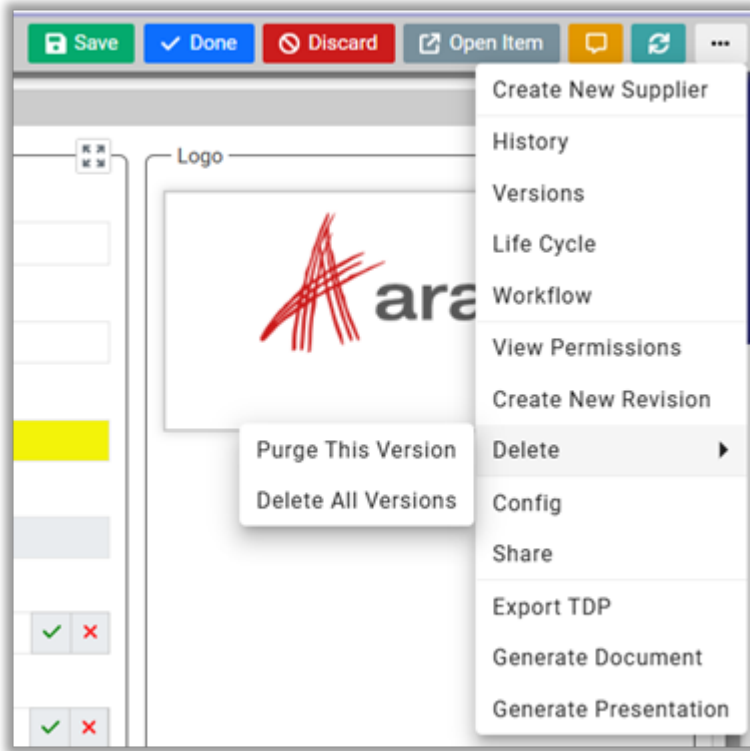


- **Edit:** Applies lock on the item with exclusive access to make changes on the item.
- **Promote:** Promotes the item to the next state of the lifecycle associated with the item.
- **Open Item:** Shows new Innovator tab with default form that shows item details in classic view.
- **Discussion Panel:** Shows discussion panel as a flyout with all messages and their replies exchanged in the current item context.
- **Refresh:** Reloads the current item by making server request.
- **Create New Item:** Shows new item page in a different tab.
- **History:** Shows history of all the changes made to current item.
- **Versions:** Shows list of all previous generations of the current item.
- **Life Cycle:** Shows associated life cycle of the current item.
- **Workflow:** Show associated workflow of the current item.
- **View Permissions:** Shows permissions associated with the current item.
- **Create New Revision:** Creates a new revision for the current template item.
- **Delete:** Allows to delete current generation or all generations of the item.
- **Config:** Config action is shown only when admin has configured the template view in order to allow end user to customize the layout of the wizard of a given ItemType.



- **Share:** Share action is shown only when admin has configured the template view in order to allow end user to share the layout of the wizard of a give ItemType with other users.

When you open the item in edit mode, following actions will be shown.



- **Save:** Saves the changes done so far on the wizard. Once changes are saved, you can't discard them using Discard action.
- **Done:** Saves the changes done so far on the item and unlocks the item so that other people can make changes.
- **Discard:** Discards all the changes done so far on the item after the last save and unlocks the item so that other people can make changes.

