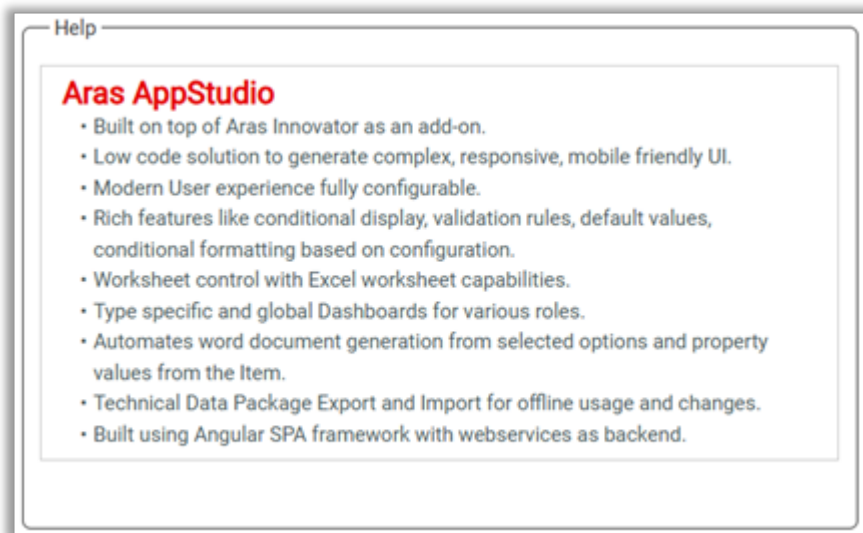
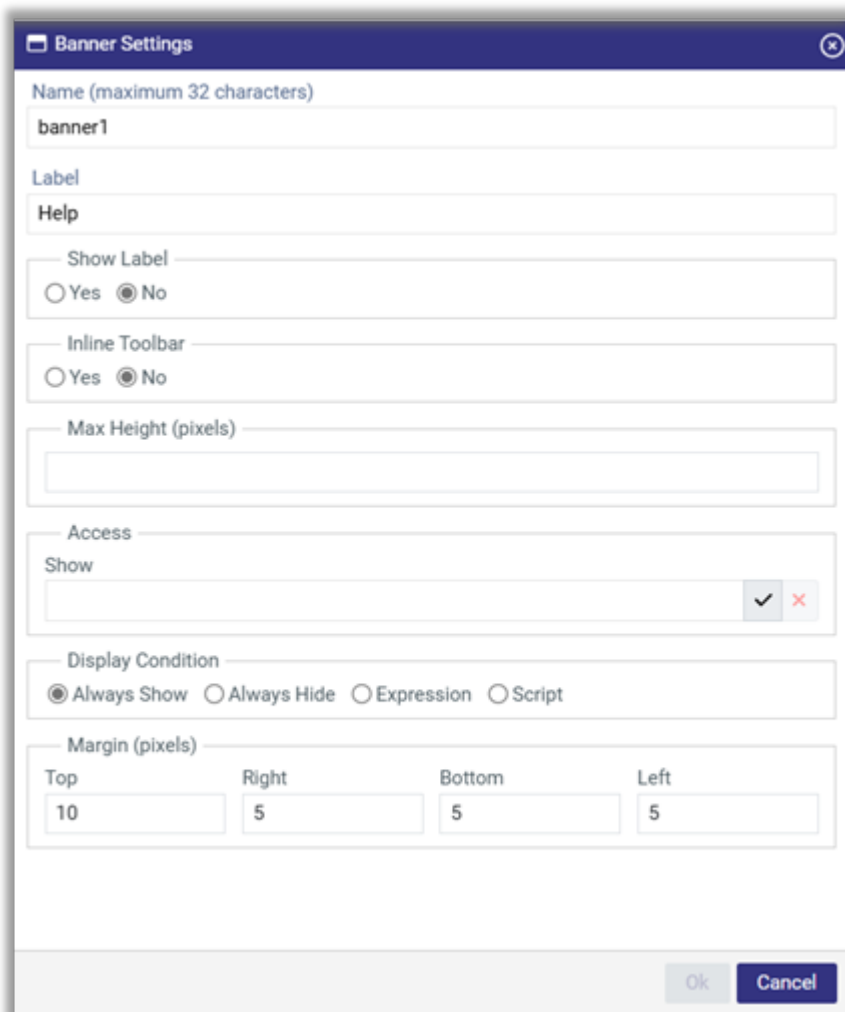


# Banner Control

Banner control can be used to show static content like instructions or help on the page. Banner control with static content is added through rich-text editor inside the template. At runtime, it just shows rich-text to the user.





The image shows a 'Banner Settings' dialog box with the following fields and options:

- Name (maximum 32 characters):** banner1
- Label:** Help
- Show Label:**  Yes  No
- Inline Toolbar:**  Yes  No
- Max Height (pixels):** (empty field)
- Access:** Show (dropdown menu with checkmark and close icons)
- Display Condition:**  Always Show  Always Hide  Expression  Script
- Margin (pixels):**
  - Top: 10
  - Right: 5
  - Bottom: 5
  - Left: 5

Buttons: Ok, Cancel

- **Name:** It is used to uniquely identify control inside the template.
- **Label:** It is used to show title on the control. It can be localized by defined Languages and Locales inside innovator.
- **Show Label:** It controls whether Label can be shown at the top of the banner control.
- **Inline Toolbar:** It allows you to show rich-text editor right in the page with its toolbar to edit the content. If its value is 'No', rich-text editor is shown in the pop-up upon clicking on the icon from the banner control.
- **Max Height:** It defines maximum height that can be used to show the banner control on the page. In the absence of this value, banner control is expanded based on its static content.
- **Access:** It allows you to define the roles which can access control. You can configure Roles (in the form group identities) to whom this control should be shown.
- **Display Condition:** Based on the option selected for Display Condition, the control will be shown or hidden in the wizard at runtime. You can select one of the options like 'Always Show', 'Always Hide', 'Expression', or 'Script'. Expression allows you to define a Boolean expression using properties from the current and previous pages (in case of multi-page application) to conditionally display the control if expression is evaluated to true. Expression will be evaluated based on the cached property values on the client. Script allows you to write custom JavaScript code that should return Boolean value. If returned value is false, the control will be hidden.
- **Margin:** It allows you to set the required top, right, bottom, left margins with respect to adjacent controls.

