

Splash Screen

The following steps outline the process to change the Aras Innovator splash screen:

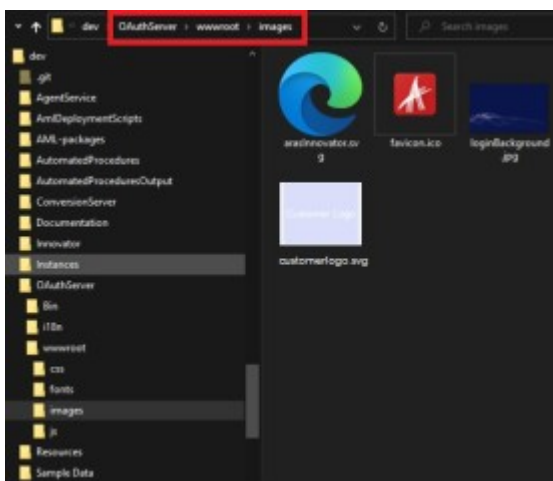
1. Select a background Image and obtain the customer's logo to be applied to the splash screen.

Important

Contributors need a tool to manipulate SVG images. Use any required tool.

2. In the following directory, add the Background image and Customer logo obtained from step 1:

```
C:\{working directory}\Instances\dev\OAuthServer\wwwroot\images
```



3. From C:\{working directory}\TransformationsOfConfigFiles\ directory, modify the OAuthServer.config file. Notice the location of the file to edit. It is important to do this in the **Transforms** folder, as shown in the screenshot below:

```

1 <?xml version="1.0" encoding="utf-8"?>
2 <configuration xmlns:xdt="http://schemas.microsoft.com/XML-Document-Transform">
3
4   <oauth configSource="OAuth.config"></oauth>
5
6   <configuration>
7     <section name="oauth" type="Aras.OAuth.Configuration.OAuthSection, Aras.OAuth.Configuration"></section>
8     <sectionGroup name="Aras">
9       <sectionGroup name="Web">
10        <section name="RequestProvider" type="
11          Aras.Web.Configuration.RequestProviderConfigurationSection, Aras.Web"></section>
12        </sectionGroup>
13      </sectionGroup>
14    </configuration>
15
16    <xdt:key="InnovatorServerUrl" value="$ADT_INNOVATOR_URL/Server/innovatorServer.aspx"
17      xdt:transform="Replace"></add>
18
19    <!--
20     'AuthenticationAdmin' is a name of user to access InnovatorServer.
21    -->
22    <xdt:key="AuthenticationAdmin" value="authadmin"></add>
23
24    <!--
25     UI Customization
26    -->
27    <xdt:key="ProductName" value="Aras Innovator"></add>
28    <xdt:key="CustomAuthenticationLogoImage" value="Aras Innovator"></add>
29    <xdt:key="LoginUrl" value="/images/ArasInnovator.png"></add>
30    <xdt:key="BackgroundImageUrl" value="/images/loginBackground.jpg"></add>
31
32  </configuration>
33 </config>
34
35 <add key="LogoUrl" value="$ADT_INNOVATOR_INSTALLATIONPATH/OAuthServer/wwwroot/images/customed.ogo.svg" xdt:transform="Replace"></add>
36 <add key="BackgroundImageUrl" value="$ADT_OAUTH_INSTALLATIONPATH/images/customerLoginBackground.jpg" xdt:transform="Replace"></add>

```

Important

It is best to use the OAuth installation path, ADT_OAUTH_INSTALLATIONPATH, directly as it may be installed differently.

4. Stage the changes before running the Build scripts.
5. Run the **./BuildAndDeploy.ps1** script to rebuild Aras Innovator.
6. Notice the changes to the login screen.

