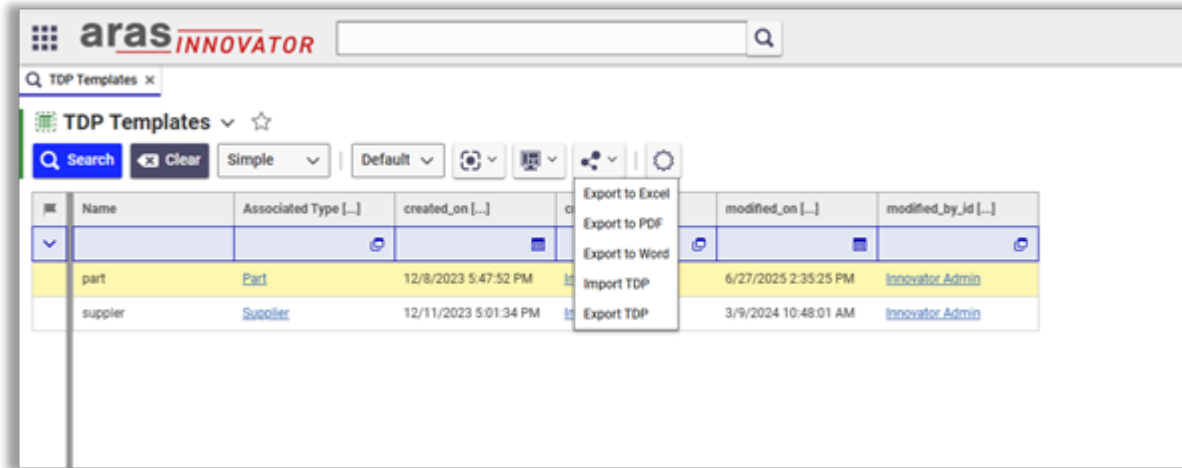


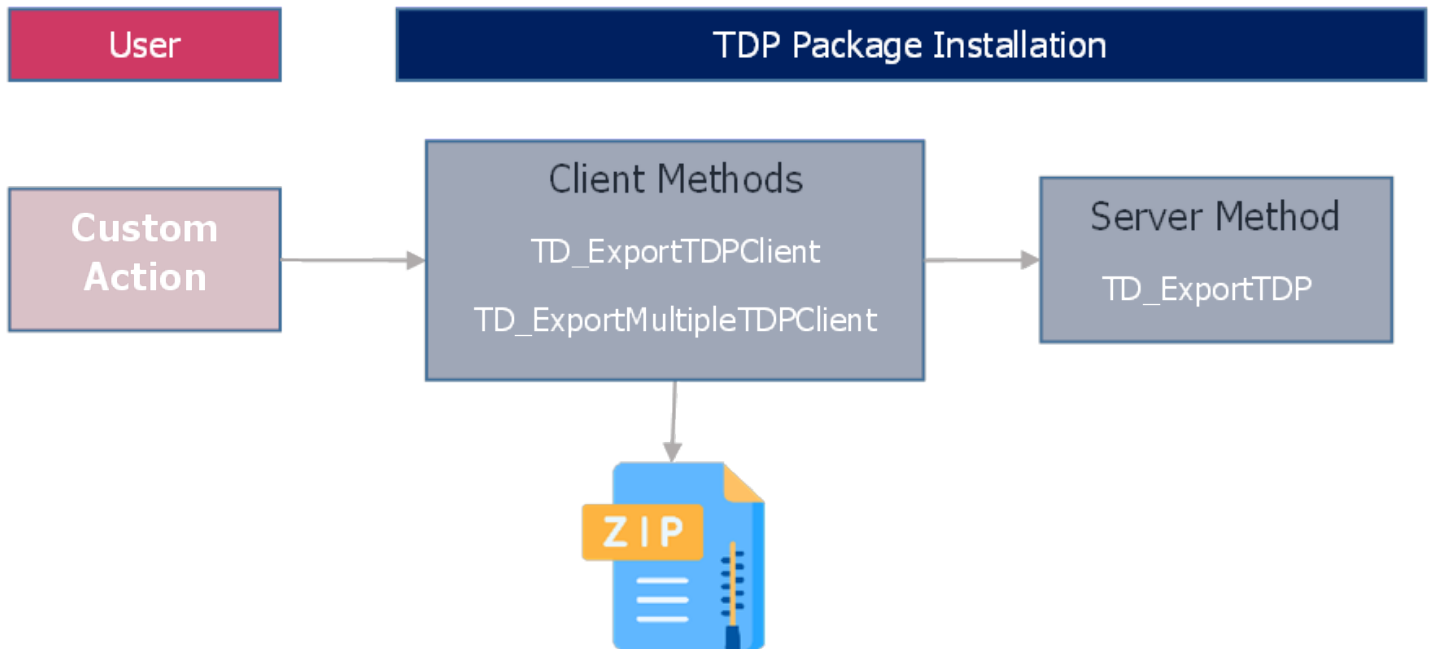
Export TDP

The Export TDP action can be configured for any ItemType and made available on both the Item Details page and the Item Search page.



Once the standard Export TDP UI action is configured by the user, the associated client method can invoke server-side methods provided with the TDP installation to generate the Technical Data Package. The server method processes the request and returns the TDP item to the client, which then uses standard Aras functionality to download the package to the user's default local download location. The exported package is delivered as a ZIP file containing an Excel document with all relevant items and relationships data, along with any associated files. When exporting from the Search Grid, users can select multiple items, and the system will compile all related data and files into a single Excel file and ZIP archive for export.





The Excel file generated as part of the Technical Data Package (TDP) can be edited offline, allowing users to update data as needed before re-importing it into Aras Innovator. To prevent accidental modifications, the File worksheet within the Excel file is password-protected. The default password can be changed by updating the value stored in the `td_TDPPassword` variable. Additionally, each worksheet contains certain columns highlighted in grey—these are essential for the re-import process and must not be edited or deleted to ensure successful data integration.

