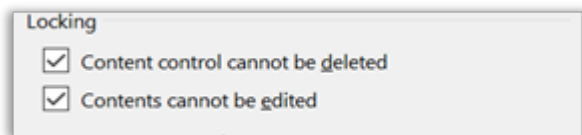
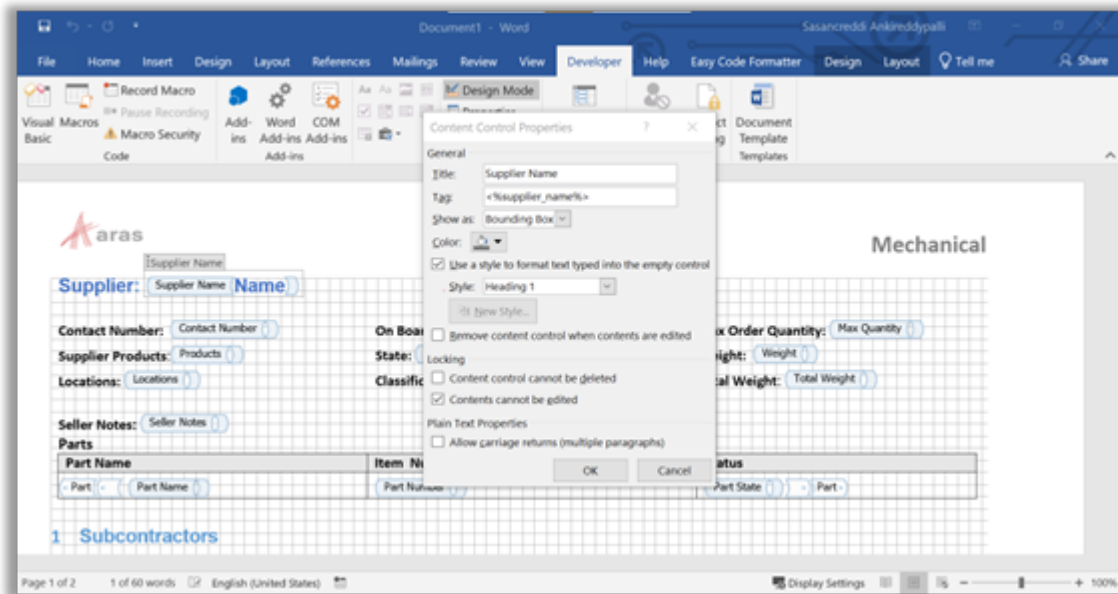


# Using Controls: Plain Text Content Control with Locking Behavior



## Content control cannot be deleted

1. This restricts the user to delete the content control.
2. Recommended to set this option 'ON' once template design is freeze.

## Contents cannot be edited set to True [ Used for Aras à MS Word mapping]

When the “Content Cannot be Edited” option is True, it prevents users from modifying the content externally. This setting is used to insert property values from Aras Innovator directly into the Word document at designated placeholders. For instance, if the tag `<%=supplier_name%>` is used and the option is set to True, the system will automatically substitute this tag with the value of the `supplier_name` property from Aras Innovator.



It's important to note that this configuration supports a one-way mapping from Aras Innovator to Microsoft Word. Whenever the goal is to retrieve and display a property value from Aras Innovator in a Word document, this option should always be set to True. For this behavior, only Plain Text and Date Picker content controls are supported—Rich Text controls are not compatible.

**Contents cannot be edited set to False [ Used for MS Word à Aras mapping]**

When the “Content Cannot Be Edited” option is False, users can enter or modify content within the control, and the updated value will be saved to the corresponding property of the Aras Innovator item during the Save operation. This type of mapping supports Rich Text, Plain Text, and Date Picker content controls. It's important to note that this mapping is only valid for direct properties of the associated item and does not apply to relationship properties or derived data.

