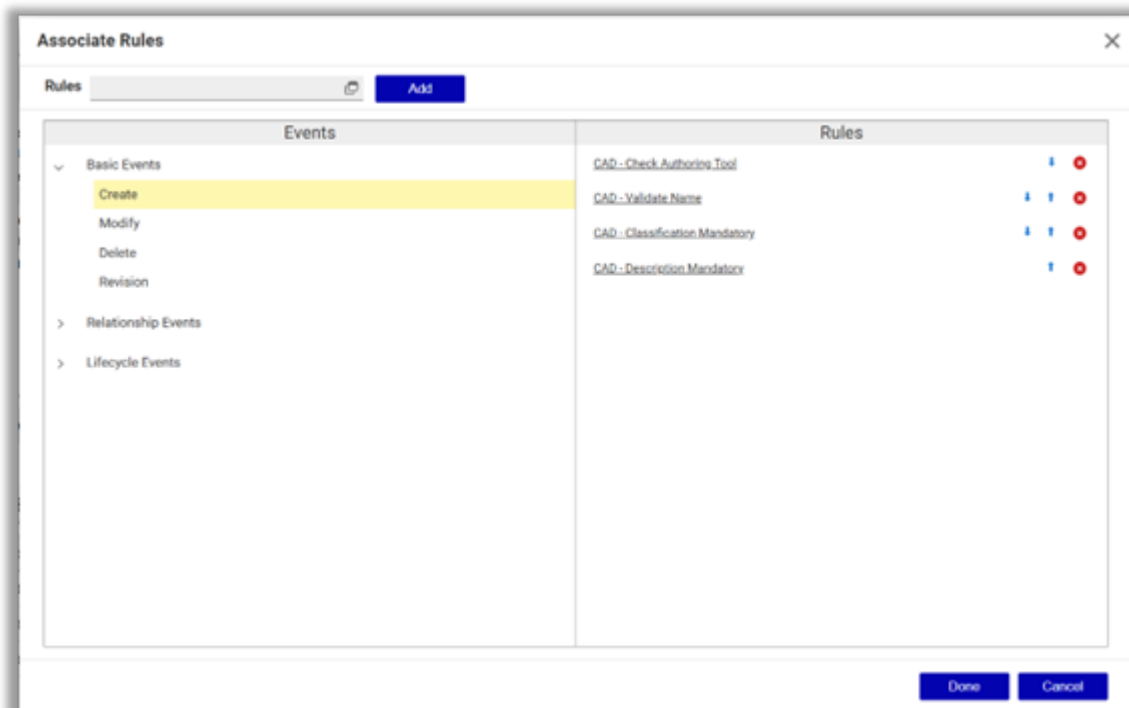
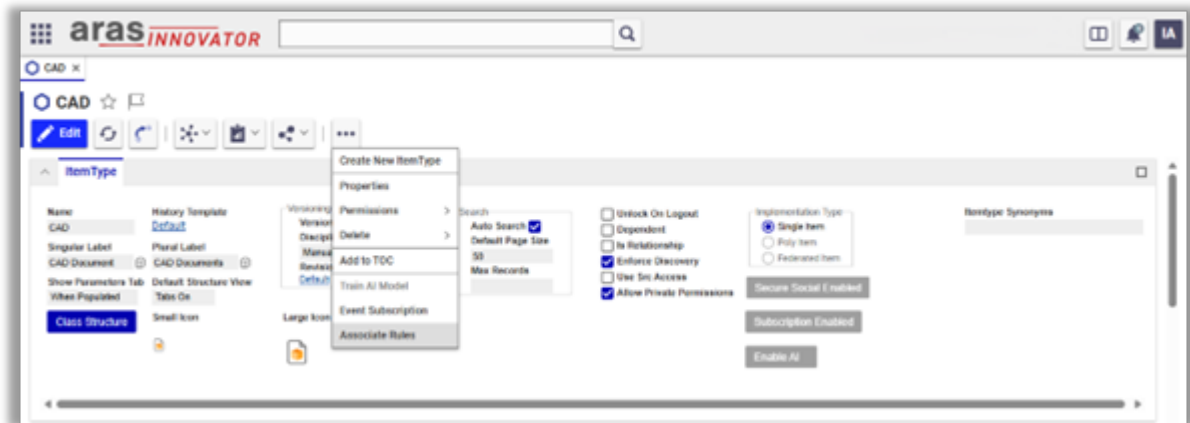


# Associate Rule/RuleSet

- “Associate Rules” action is available on ItemType
- User can select Rules/RuleSets which are defined for that particular itemtype and are in Released state



- Available Events
  - Basic Events



- Create
- Modify
- Delete
- Revision
- Lifecycle Events – Promotion on Lifecycle state
  
- Relationship Events – Add/Delete of relationship items

