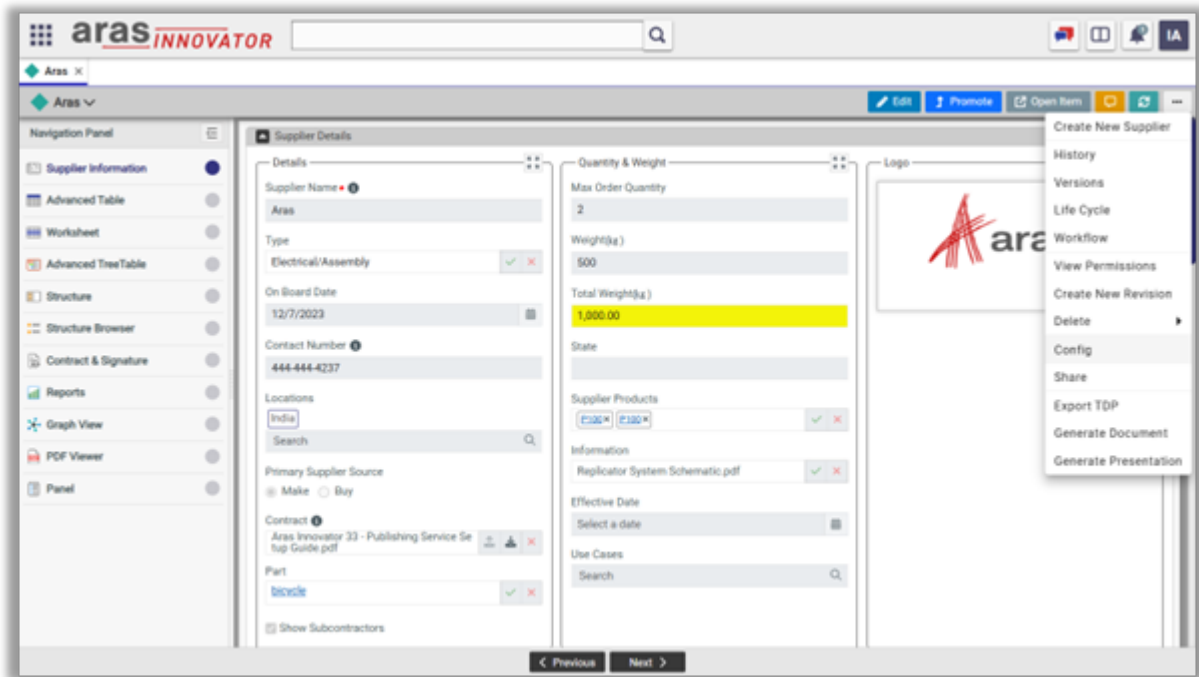


User Dashboard

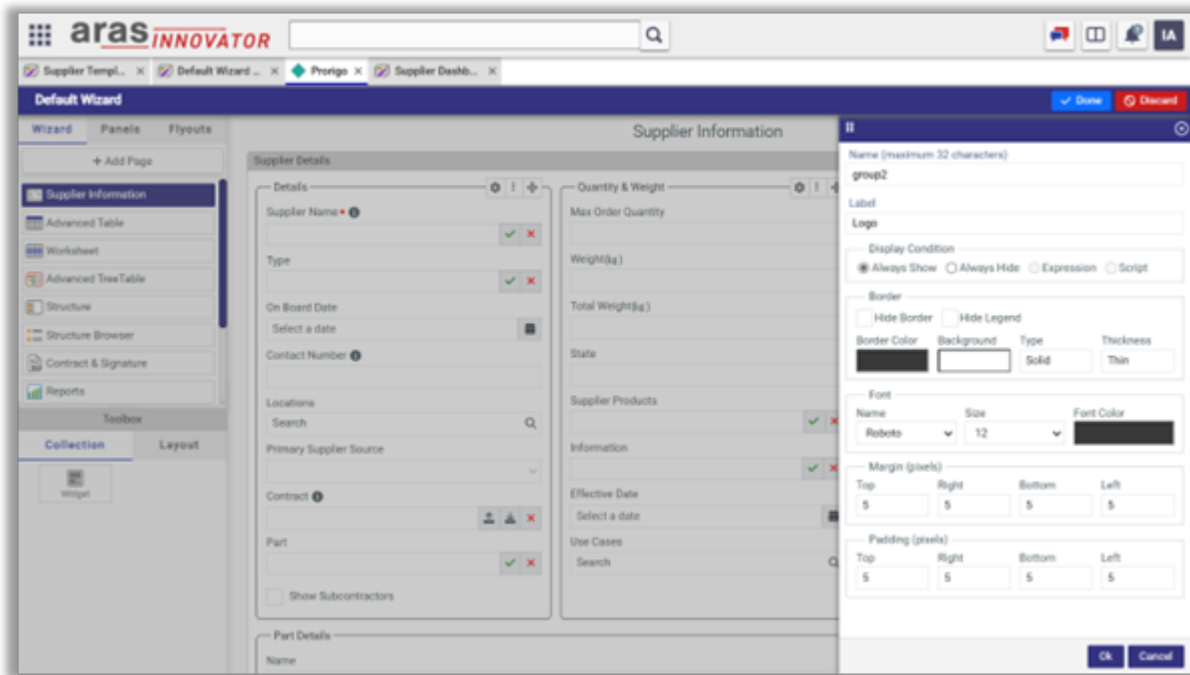
When admin selects “Enable Config” option on template, end user can configure his view based on the **default view** shown to him at runtime. When admin selects “Enable Sharing” option, end user can **share his customized view** with other users in the in the organization.

End users can create their own views based on the admin defined wizards and dashboards. For each ItemType, end users can create any number of views for the wizard and the dashboard. These views are shown along with the default views defined by the admin. To create the view upon clicking Config action, end user will be shown with the designer using which he can configure or hide existing controls from the layout. He can also add new widgets from widget libraries to the layout.



Upon selecting Config action from the dropdown, designer will be shown the current template, where end user can customize the view using designer capabilities. Using Display Condition option, end user can hide or show the control on the page. For collection controls like Table and Worksheet, by selection Settings icon, columns can be reordered or hidden from the view.

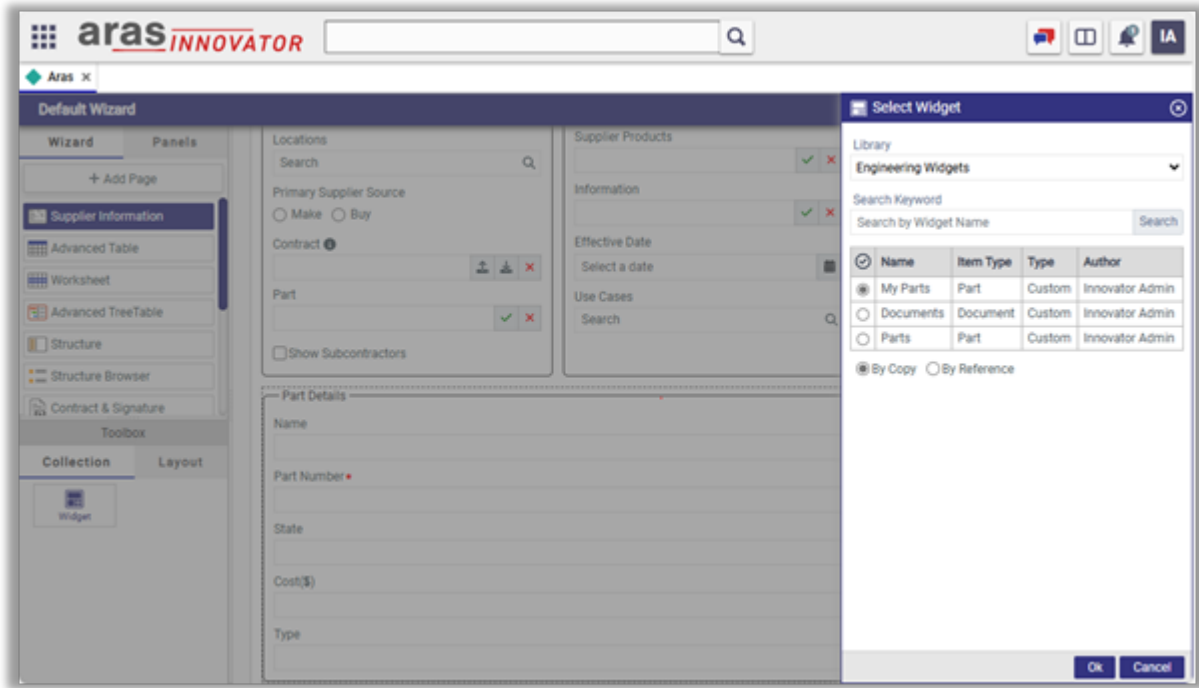




When admin creates any Widgets in the libraries, user can choose those widgets and place them on the page. Widgets are the predefined UI components, created from the existing collection controls of the template by the admin. Once defined can be used across many templates. Widgets are organized in libraries that are defined by admin. Admin can give access to the libraries based on user's roles. While creating wizard or dashboard template for a specific ItemType, admin can select a collection control and add it to the library.

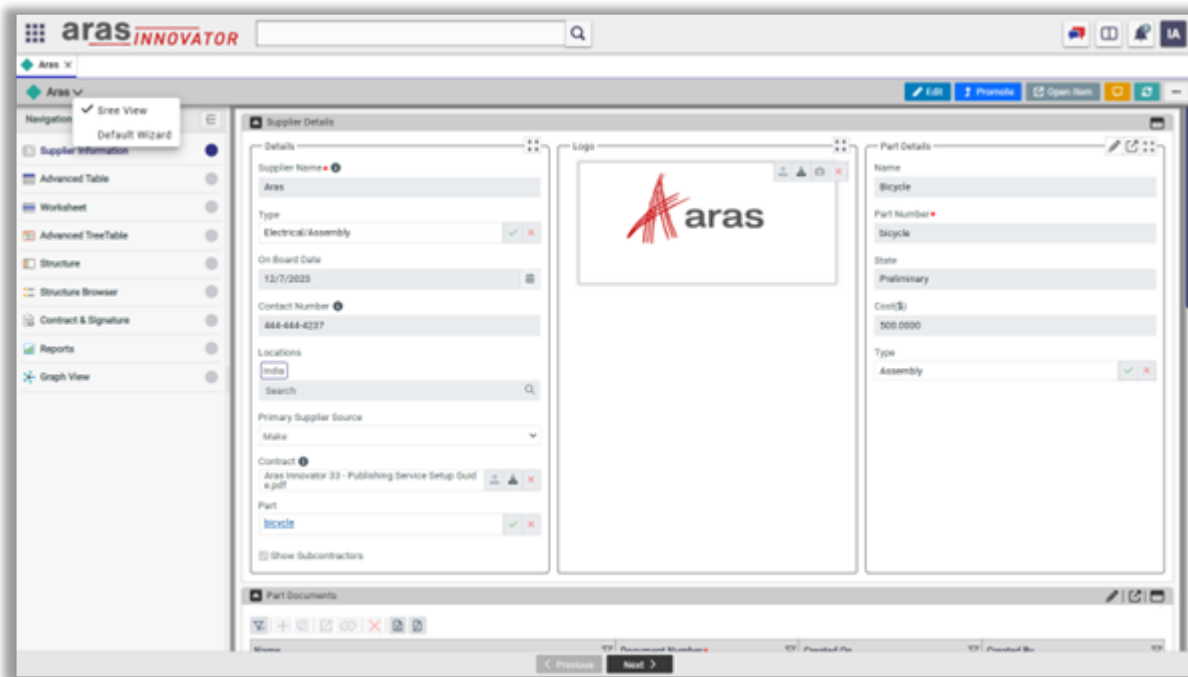
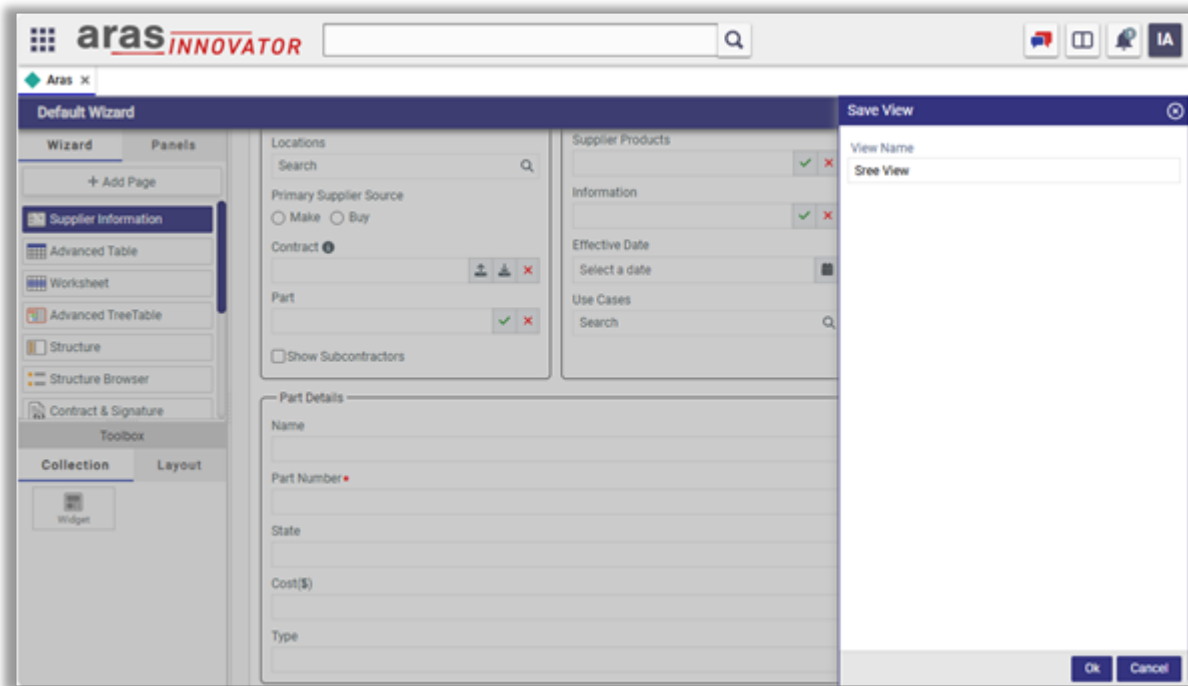
Adding a widget from library to the template can be done using Widget control from the toolbox. Widget can be added to template by-copy or by-reference by selecting appropriate option from 'Widget Settings' flyout. Adding widget by-copy, will copy the definition of the Widget to the template. Any subsequent updates done on the widget in the library will not reflect in the template if the widget is added by copy. By adding widget by-reference, will always show the latest widget based on its updates in the library.





After making the changes, when user clicks on the Save action, flyout will be shown to enter name for the customized view. A new template view will be created with the given view name for the current user.





End users can create custom views for Global and Type dashboards similar to the Wizard.



aras INNOVATOR

Supplier Temp... x Default Wizard... x Global Dashbo... x

Global Dashboard

My Data

- Requirements
- Simulation
- My Tasks
- My Engineering Dashboard
- Power BI
- Dev's Dashboard
- Power BI Reports
- Global Dashboard

Requirement Number	State	Type	Group
REQ-000000017	Draft	Requirement	Mechanical
REQ-000000018	Draft	Requirement	Mechanical
REQ-000000022	Draft	Requirement	Mechanical
REQ-000000023	Draft	Requirement	Mechanical
REQ-000000025	Draft	Requirement	Mechanical
REQ-000000026	Draft	Requirement	Mechanical
REQ-000000027	Draft	Requirement	Mechanical
REQ-000000028	Draft	Requirement	Mechanical
REQ-000000029	Draft	Requirement	Mechanical
REQ-000000030	Draft	Requirement	Mechanical

Page 1 of 2 Page Size 10

Task Number	Name	Type	Stage	Task Owner
SM-000021	Mechanical Plug Socket 2P+0	Service Task	Analysis	Dan Park
SM-000016	Frequencies Analysis	Manual Task	Analysis	Dan Park
SM-000009	Convective Heat Transfer Analysis P2	Manual Task	Analysis	Dan Park
SM-000011	Postprocessing p1-3 Results	Manual Task	Analysis	Dan Park
SM-000012	Test Data Curve Fitting	Manual Task	Report	Simulation Engineer
SM-000006	CAD model preparation for CFD analysis	Manual Task	CAD Preparation	Dan Park
SM-000019	Compare with As Designed	Manual Task	Analysis Post	Dan Park
SM-000004	Extruder Mesh with Contacts Refinement	Manual Task	Mesh	Dan Park
SM-000003	Extruder Thermal Analysis	Manual Task	Analysis	Dan Park
SM-000022	Socket Mechanical Unplug 2P+0	Service Task	Analysis	Dan Park

Page 1 of 3 Page Size 10

Engineering Data

Parts

Part Number	Name	Type	Weight (g)	State
1	CYCOMP	Software		Preliminary
2	FR-4441	Orange 53.5 cm Carbon Fibre Frame	Software	Preliminary
3	FR-4447	Glossy Black 46.5 cm Carbon Fibre Frame	Software	Preliminary
4	FR-4464	Red 23 inch cm Titanium Frame	Software	Preliminary
5	FR-4625	Yellow Black 17 inch cm Aluminum	Software	Preliminary

Documents

Document Number	Name	Type	State
0004	DOC-Coating	Specification	Preliminary
100001	Test Office Connector	Ad-hoc	Preliminary
100002	Mac Doc 1	Ad-hoc	Preliminary
100003	Requirement Change	Ad-hoc	Preliminary

