

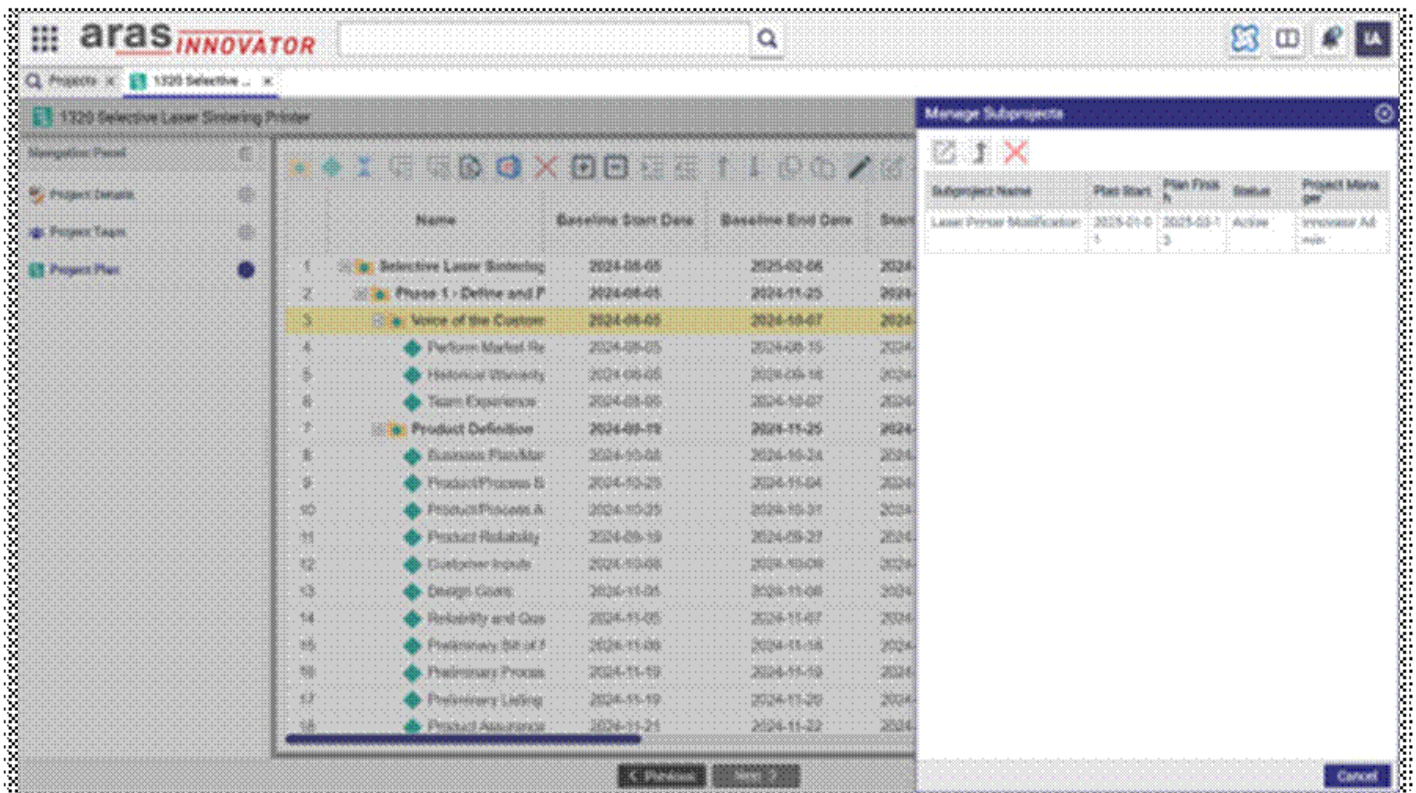
Master and Subprojects

Complex projects can be structured using a master project and its associated subprojects, mirroring traditional hierarchical project planning. This modular approach breaks large initiatives into manageable sections while preserving overall cohesion.

- **Insert Subproject:** Use the Insert Subproject action to add one or more subprojects to the main project. Subprojects can be selected from the search flyout if they have already been created.
- **Manage Subproject:** - After insertion, the Subproject action becomes available—allowing users to update the subproject's state, remove it from the master, or open it in a separate tab for focused editing.

Master Projects: A master project serves as the top-level container for coordinating multiple subprojects, offering a unified, high-level view of progress and dependencies.

Subprojects: Subprojects are independently managed standalone projects linked to a master project. They allow teams to concentrate on specific deliverables while maintaining alignment with the overarching project objectives.



Users can perform all toolbar actions on subprojects, ensuring consistent functionality across all project levels. In the Timeline View, subprojects are visually highlighted in yellow, making them easy to distinguish within a complex project structure. Additionally, the system supports nested subprojects, allowing users to insert one subproject within another.

