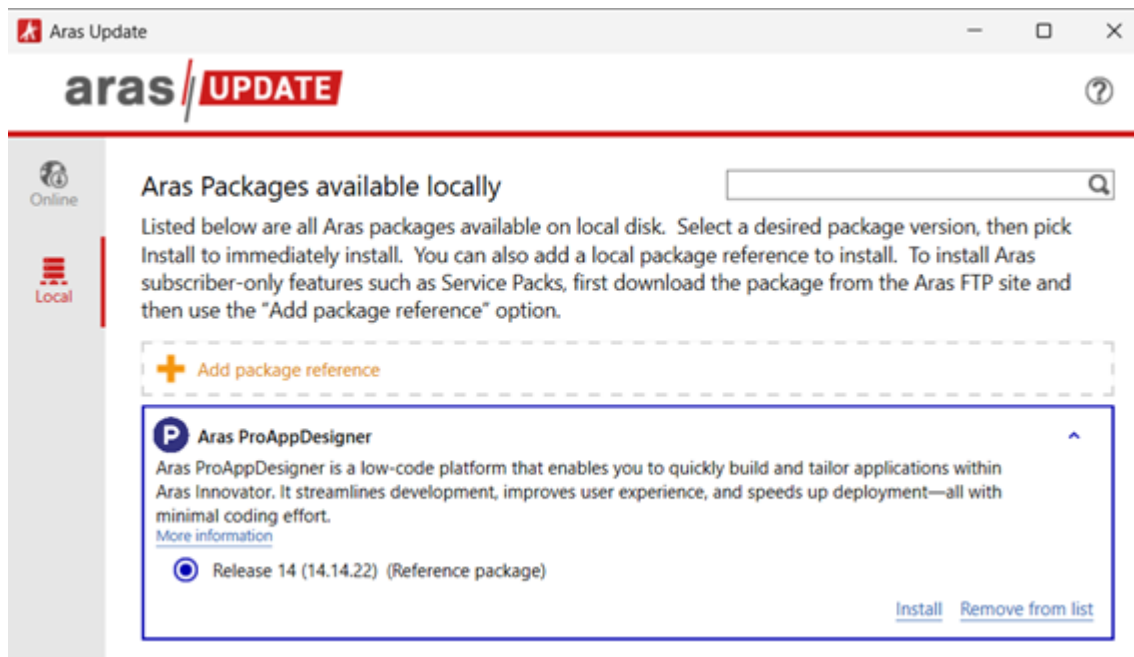


Installing the Aras ProAppDesigner

The ProAppDesigner can be installed using either the **Automated Installation** option (using the Aras Update tool), or the **Manual Installation** option (using the Aras Import Tool).

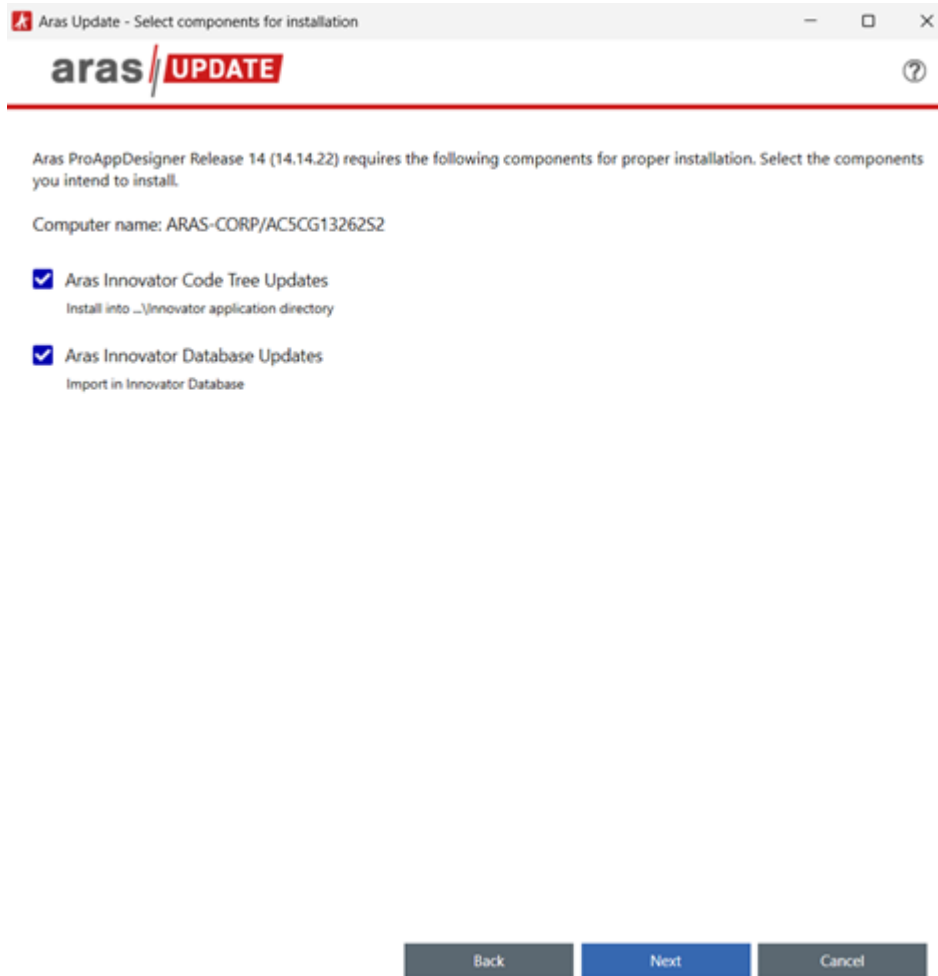
Automated Installation Option

1. Download the **Aras ProAppDesigner CD Image** from the Aras File Sharing site.
2. Unzip the Aras ProAppDesigner CD Image on the local computer.
3. Enable the **Super User** login.
4. Launch the **ArasUpdate.exe** file as administrator.
5. On a default installation, the ArasUpdate.exe file can be found in the C:\Program Files (x86)\Aras\Aras Update \ directory.
6. Locate and select the **Aras ProAppDesigner** package.



7. Click **Install**.





8. Select the **Aras Innovator Code Tree Updates** and **Aras Innovator Database Updates** options.
9. Click **Next**.
10. Select the appropriate logging option and click **Next**.
The logging option is used to record the installation attempt and can be used to troubleshoot issues.
11. Input the connection information and click **Install**.
 - o Server URL = The connection URL for Aras Innovator
 - o Database = The target Aras Innovator database
 - o Username = root
 - o Password = Password for "root" login (Default is "innovator")

Aras Update should import everything required for Aras Innovator ProAppDesigner.



Aras Update

aras // UPDATE

Enter the following parameters for each component you are going to install and then click Install button to continue.

✓ Aras Innovator Code Tree Updates

Install Path (example - ...\Innovator application directory)

C:\Program Files (x86)\Aras\Innovator\Innovator Browse...

✓ Aras Innovator Database Updates

Server URL (example - 'http://localhost/InnovatorServer')

http://localhost/InnovatorServer

Database Name (example - 'InnovatorSolutions')

InnovatorSolutions

Username (should use 'root' User)

root

Password for 'root' User

Back Install Cancel

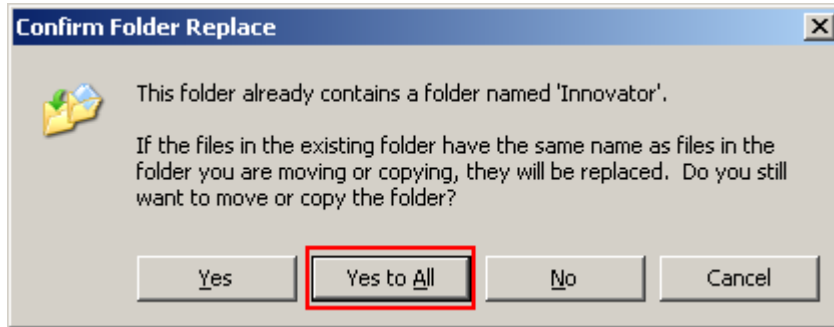
12. After the import is complete, **disable** the Super User login.

Manual Installation Option

1. Download the **Aras ProAppDesigner 14** CD image from the Aras File Sharing site, in the Aras ProAppDesigner Releases folder, and unzip the file on the local computer.
2. Copy the \ Files\Innovator\Client folder to the root of your installation directory. When prompted, **overwrite** the existing \Innovator\Client folder and all of its contents.

It is **recommended** that this step be performed by an administrator on the server.





3. From the `\Files\Innovator\Server` folder, copy all files matching `Prorigo.*` to the root of your installation directory. When prompted, **overwrite** the existing files in the `\Innovator\Server` folder.

It is **recommended** that this step be performed by an administrator on the server.

4. From the `\Files\Innovator\Server` folder, copy all remaining files **excluding** `Prorigo.*` into the `\Innovator\Server` folder. Do **not overwrite** any existing files during this step.
5. Copy the `\Files\ConversionServer` folder to the root of your install directory, overwriting the existing `\ConversionServer` folder and all its contents.

It is recommended that this step be performed by an administrator on the server.

6. If any of the below DLLs are available in `\Innovator\Server\bin` or in `ConversionServer\bin` folder, delete them
 - o `Prorigo.Protrak.ExpressionEvaluatorStd.Impl.dll`
 - o `Prorigo.Protrak.ExpressionEvaluatorStd.dll`
 - o `Prorigo.Plm.PresentationGenerator.dll`
 - o `Prorigo.Plm.PresentationGenerator.Aras.dll`
 - o `Prorigo.Plm.Logging.Framework.dll`
 - o `Prorigo.Plm.DocumentGenerator.dll`
 - o `Prorigo.Plm.DocumentGenerator.Aras.dll`
 - o `Prorigo.Plm.DiscussionPanel.dll`
 - o `Prorigo.Plm.Core.dll`
 - o `Prorigo.Plm.Aras.BackgroudCronJobFramework.dll`
 - o `Prorigo.Plm.AppStudio.RuleEngine.Impl.dll`
 - o `Prorigo.Plm.AppStudio.RuleEngine.dll`
 - o `Prorigo.Plm.AppStudio.IntegrationFramework.dll`
 - o `Prorigo.Plm.AppStudio.dll`
7. From the root of your code tree, navigate to `\Innovator\Server` and edit the `method-config.xml` file.

1. Add below entries as shown:

...



```

<!-- ProAppDesigner DLLs : Start -->
<name>$(binpath)/Proriqo.Plm.Aras.dll</name>
<name>$(binpath)/Proriqo.Plm.Aras.AppStudio.dll</name>
<name>$(binpath)/Proriqo.Plm.Aras.TDP.dll</name>
<name>$(binpath)/Proriqo.Plm.Aras.SubscriptionFramework.dll</name>
<name>$(binpath)/Proriqo.Plm.Aras.DocumentGenerator.dll</name>
<name>$(binpath)/Proriqo.Plm.Aras.BackgroundCronJobFramework.dll</name>
<name>$(binpath)/Proriqo.Plm.Aras.RuleEngine.dll</name>
<name>$(binpath)/Proriqo.Plm.Aras.PresentationGenerator.dll</name>
<name>$(binpath)/Proriqo.Plm.Aras.IntegrationFramework.dll</name>
<name>$(binpath)/Proriqo.Plm.Aras.IntegrationFramework.Connector.dll</name>
<name>$(binpath)/Proriqo.Plm.Aras.DiscussionPanel.dll</name>
<name>$(binpath)/Proriqo.Plm.Aras.Logger.dll</name>
<name>$(binpath)/Proriqo.Plm.LicensingFramework.dll</name>
<!-- ProAppDesigner DLLs : End -->

```

</ReferencedAssemblies>

2. Save the changes to the method-config.xml file and close it

Important

If any of the DLLs mentioned in the DLLs to be deleted section, please delete the corresponding entry from method-config.xml file.

8. From the root of your code tree, navigate to \Innovator\Client and edit the InnovatorClient.config file.
 1. Change the value of the filesRevision attribute. The value should be changed from std to 2, 3, 4, etc

```

<auth configSource="Auth.config" />
<achingModule moduleEnabled="true" filesRevision="2" />
<staticContent>

```

...

2. Save the changes to the InnovatorClient.config file and close it.

9. From the root of your code tree, open ConversionServerConfig.xml file.

1. Add below entries in Converters.

```

<Converters>
  <Converter name="Std_CBJ_Converter"
    type="Proriqo.Plm.Aras.BackgroundCronJobFramework.BCJ_Converter,
Proriqo.Plm.Aras.BackgroundCronJobFramework" />
  <Converter name="Std_BackgroundJob_Converter_Type"
    type="Proriqo.Plm.Aras.BackgroundCronJobFramework.BCJ_Converter,
Proriqo.Plm.Aras.BackgroundCronJobFramework" />
</Converters>

```

...



2. Save the changes to the `ConversionServerConfig.xml` file and close it.
10. Restart the World Wide Web Service (IIS).

11. Execute Pre Import Scripts

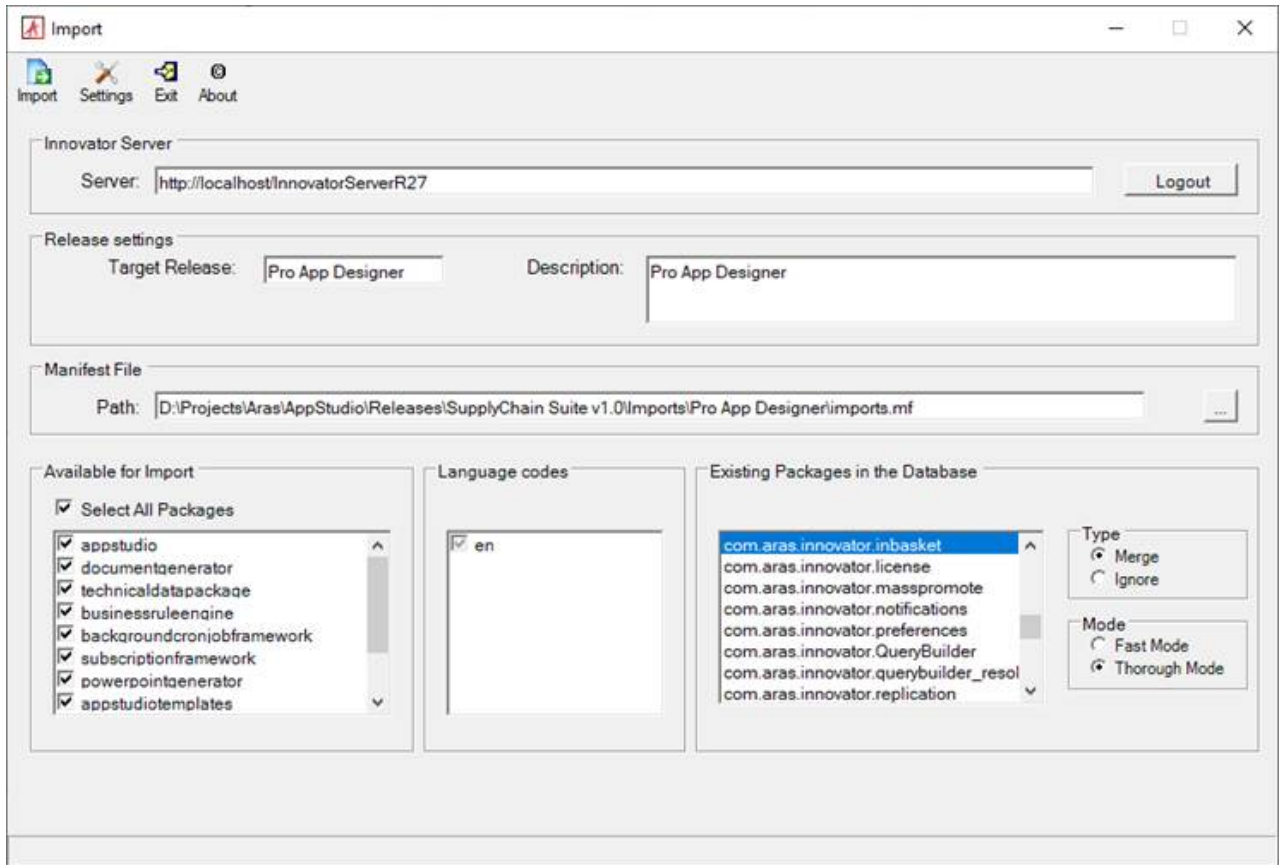
Before you install Aras ProAppDesigner, execute the following scripts:

1. Navigate Aras Nash tool using URL `http://localhost/InnovatorServer/Client/scripts/nash.aspx`
2. Login in Nash using **admin** user.

The screenshot shows the Aras Nash web interface. The browser address bar displays the URL: `localhost/InnovatorServerR27/Client/X-salt=std_14.0.15.38102-X/scripts/nash.aspx`. The page header includes the Aras logo and the text "aras | NASH", along with "Database: InnovatorR27_New" and "User: admin". Below the header, there are two dropdown menus: "TimeZone: Eastern Standard Time" and "Culture: en-US - English (United States)". There are also two input fields: "Action: ApplyAML" and "Server: http://localhost/InnovatorServerR27/Server/InnovatorServer.aspx". A large empty text area labeled "XML:" is present, with "Submit" and "Clear" buttons to its right. Below this, there is a "Run time, sec: 0,000" indicator and a "Result: read" status, with a "ShowXml" button to the right of the result area.

3. In the package go to folder `PreImportAMLScripts\Manual Scripts`, open each file in below sequence, copy the content in XML form and click on Submit.
 - `04500_TemplateDeploy_PreAML.xml`
12. Complete the Installation of ProAppDesigner: Import the **ProAppDesigner** database package with the Package Import Export Utilities (For more information using this tool, please see the *Aras Innovator - Package Import Export Utilities* documentation.)
 1. You will need to **enable** the Super User login to perform this step.
 2. Browse to the `\PackageImportExportUtilities\Import\` folder and run the `Import.exe` file.





3. Enter the following information:

- **Server** = The connection URL for Aras Innovator
- **Database** = The target Aras Innovator database (login screen)
- **Username** = root (login screen)
- **Password** = Password for "root" login (Default is "innovator") (login screen)
- **Target Release** = ProAppDesigner
- **Description** = ProAppDesigner
- **Manifest File Path** = The manifest is found in the unzipped patch folder in \Aras ProAppDesigner CD Image\Imports\ProAppDesigner\imports.mf
- **Available for Import** = Check all packages
- **Type** = Merge
- **Mode** = Thorough Mode

4. Click the Import button.

13. **Disable** the Super User login.

14. Execute **Post Import Scripts**

After you install Aras ProAppDesigner, execute the following scripts:

1. Navigate Aras Nash tool using URL <http://localhost/InnovatorServer/Client/scripts/nash.aspx>

2. Login in Nash using **admin** user.



← → ↻ localhost/InnovatorServerR27/Client/X-salt=std_14.0.15.38102-X/scripts/nash.aspx

aras | **NASH** Database: **InnovatorR27_New** User: **admin**

TimeZone: **Eastern Standard Time** Culture: **en-US - English (United States)**

Action: **ApplyAML** Server: **http://localhost/InnovatorServerR27/Server/InnovatorServer.aspx**

XML:

[Submit](#)
[Clear](#)

Run time, sec: **0,000** Result: [read](#)

[ShowXml](#)

3. In the package go to folder PostImportAMLScripts\Manual Scripts, open each file in below sequence, copy the content in XML form and click on Submit.

- 05000_TemplateDeploy_PostAML.xml

